

MATLAB[®] Compiler SDK[™]

MATLAB[®] Production Server[™] Testing Guide



MATLAB[®]

R2020b



How to Contact MathWorks



Latest news: www.mathworks.com
Sales and services: www.mathworks.com/sales_and_services
User community: www.mathworks.com/matlabcentral
Technical support: www.mathworks.com/support/contact_us



Phone: 508-647-7000



The MathWorks, Inc.
1 Apple Hill Drive
Natick, MA 01760-2098

MATLAB® Compiler SDK™ MATLAB® Production Server™ Testing Guide

© COPYRIGHT 2012–2020 by The MathWorks, Inc.

The software described in this document is furnished under a license agreement. The software may be used or copied only under the terms of the license agreement. No part of this manual may be photocopied or reproduced in any form without prior written consent from The MathWorks, Inc.

FEDERAL ACQUISITION: This provision applies to all acquisitions of the Program and Documentation by, for, or through the federal government of the United States. By accepting delivery of the Program or Documentation, the government hereby agrees that this software or documentation qualifies as commercial computer software or commercial computer software documentation as such terms are used or defined in FAR 12.212, DFARS Part 227.72, and DFARS 252.227-7014. Accordingly, the terms and conditions of this Agreement and only those rights specified in this Agreement, shall pertain to and govern the use, modification, reproduction, release, performance, display, and disclosure of the Program and Documentation by the federal government (or other entity acquiring for or through the federal government) and shall supersede any conflicting contractual terms or conditions. If this License fails to meet the government's needs or is inconsistent in any respect with federal procurement law, the government agrees to return the Program and Documentation, unused, to The MathWorks, Inc.

Trademarks

MATLAB and Simulink are registered trademarks of The MathWorks, Inc. See www.mathworks.com/trademarks for a list of additional trademarks. Other product or brand names may be trademarks or registered trademarks of their respective holders.

Patents

MathWorks products are protected by one or more U.S. patents. Please see www.mathworks.com/patents for more information.

Revision History

March 2015	Online only	New for Version 6.0 (Release R2015a)
September 2015	Online only	Revised for Version 6.1 (Release 2015b)
March 2016	Online only	Revised for Version 6.2 (Release 2016a)
September 2016	Online only	Revised for Version 6.3 (Release R2016b)
March 2017	Online only	Revised for Version 6.3.1 (Release R2017a)
September 2017	Online only	Revised for Version 6.4 (Release R2017b)
March 2018	Online only	Revised for Version 6.5 (Release R2018a)
September 2018	Online only	Revised for Version 6.6 (Release R2018b)
March 2019	Online only	Revised for Version 6.6.1 (Release R2019a)
September 2019	Online only	Revised for Version 6.7 (Release R2019b)
March 2020	Online only	Revised for Version 6.8 (Release R2020a)
September 2020	Online only	Revised for Version 6.9 (Release R2020b)

	Deployable Archive Creation	
1		
	Create a Deployable Archive for MATLAB Production Server	1-2
	Create a Function In MATLAB	1-2
	Create a Deployable Archive with Production Server Compiler App	1-2
	Customize the Application and Its Appearance	1-3
	Package the Application	1-3
	Create and Install a Deployable Archive with Excel Integration For MATLAB Production Server	1-5
	Create Function In MATLAB	1-5
	Create Deployable Archive with Excel Integration Using Production Server Compiler App	1-5
	Customize the Application and Its Appearance	1-6
	Package the Application	1-7
	Install the Deployable Archive with Excel Integration	1-8
	MATLAB Production Server Integration Testing	
2		
	Write a Test Client	2-2
	Test Client Data Integration Against MATLAB	2-3
	Create a MATLAB Function	2-3
	Prepare for Testing	2-3
	Test Using RESTful API	2-6
	Testing Using Java Client Application	2-10
	MATLAB Production Server Excel Add-In	
3		
	Data Marshaling Rules	3-2
	Default Marshaling Rules	3-2
	Change Rules for Marshaling Data into MATLAB	3-2
	Change Rules for Marshaling Data into Excel	3-2

MATLAB Production Server Excel Add-In

4	
	XLA File Not Generated 4-2
	Server Configuration Add-in Not Enabled 4-3
	Error Using a Variable Number of Outputs 4-4

Functions

5

Apps

6

Client Programming

7

	Create a Java Client Using the MWHttpClient Class 7-2
	Create a C# Client Using MWHttpClient 7-5
	Create a Python Client 7-8
	Create a C++ Client 7-9

RESTful API JSON Encode and Decode Functions

8

Persistence Functions

9

Deployable Archive Creation

Create a Deployable Archive for MATLAB Production Server

Supported platform: Windows®, Linux®, Mac

This example shows how to create a deployable archive from a MATLAB function. You can then give the generated archive to a system administrator to deploy it on the MATLAB Production Server environment.

Create a Function In MATLAB

In MATLAB, examine the MATLAB program that you want to package.

For this example, write a function `addmatrix.m` as follows.

```
function a = addmatrix(a1, a2)

a = a1 + a2;
```

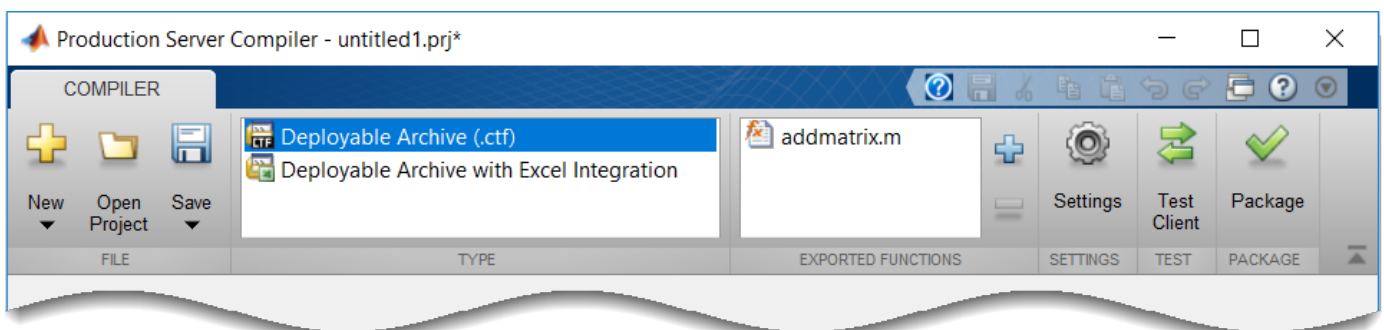
At the MATLAB command prompt, enter `addmatrix([1 4 7; 2 5 8; 3 6 9], [1 4 7; 2 5 8; 3 6 9])`.

The output is:


```
ans =
     2     8    14
     4    10    16
     6    12    18
```

Create a Deployable Archive with Production Server Compiler App

- 1 On the **MATLAB Apps** tab, on the far right of the **Apps** section, click the arrow. In **Application Deployment**, click **Production Server Compiler**. In the **Production Server Compiler** project window, click **Deployable Archive (.ctf)**.



Alternatively, you can open the **Production Server Compiler** app by entering `productionServerCompiler` at the MATLAB prompt.

- 2 In the **MATLAB Compiler SDK** project window, specify the main file of the MATLAB application that you want to deploy.
 - 1 In the **Exported Functions** section, click .
 - 2 In the **Add Files** window, browse to the example folder, and select the function you want to package.

Click **Open**.

The function `addmatrix.m` is added to the list of main files.

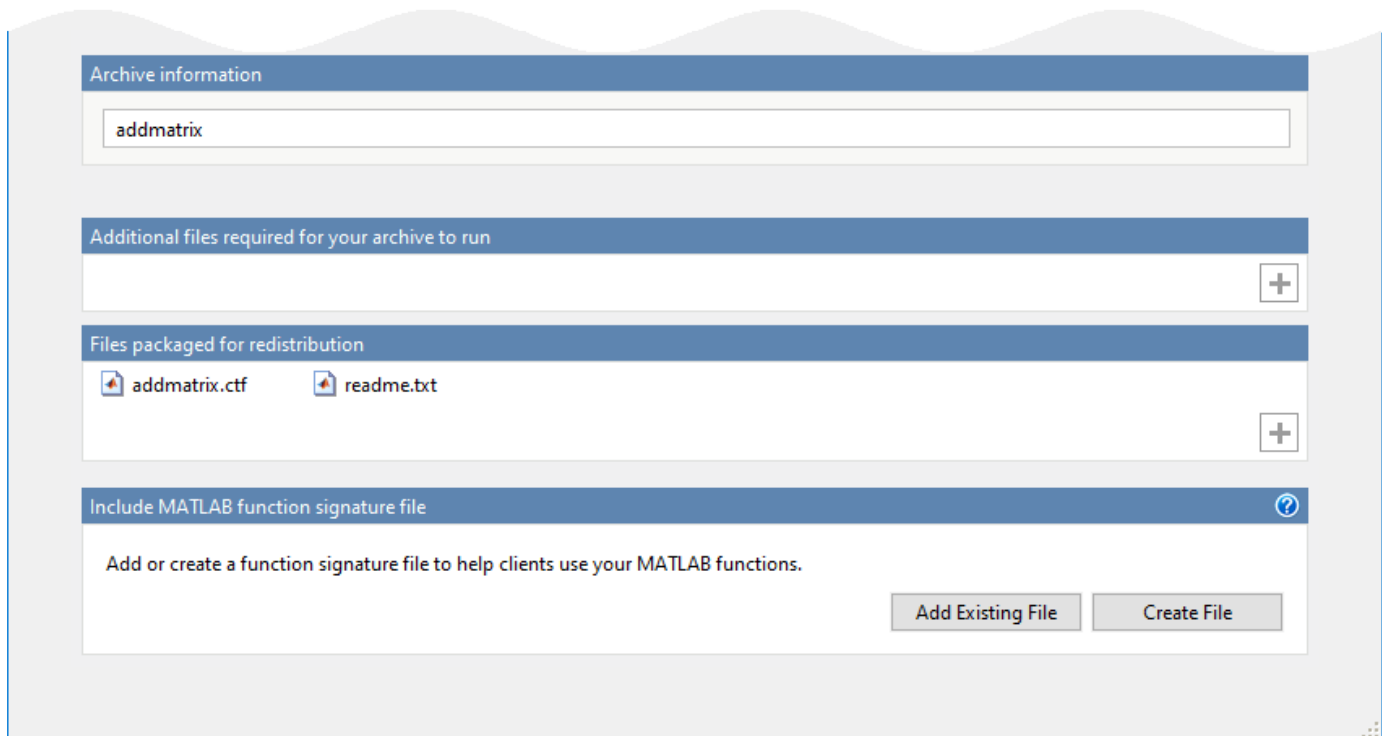
Customize the Application and Its Appearance

You can customize your deployable archive, and add more information about the application as follows:

- **Archive information** — Editable information about the deployed archive.
- **Additional files required for your archive to run** — Additional files required to run the generated archive. These files are included in the generated archive installer. See “Manage Required Files in Compiler Project”.
- **Files packaged for redistribution** — Files that are installed with your archive. These files include:
 - Generated deployable archive
 - Generated `readme.txt`

See “Specify Files to Install with Application”.

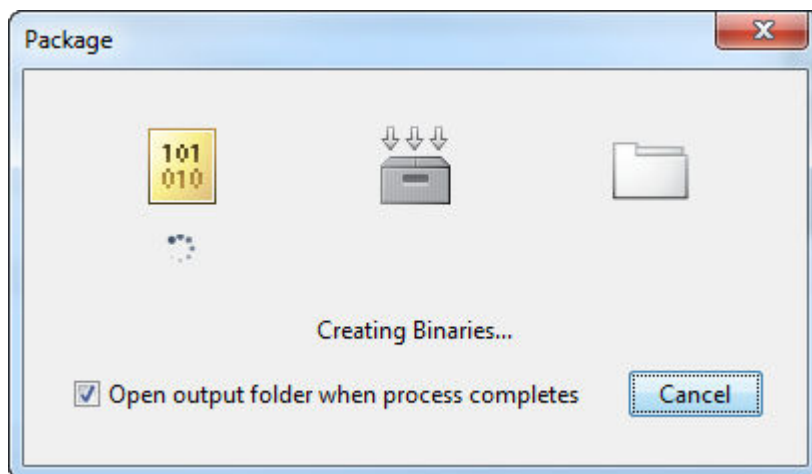
- **Include MATLAB function signature file** — Add or create a function signature file to help clients use your MATLAB functions. See “MATLAB Function Signatures in JSON”.



Package the Application

- 1 To generate the packaged application, click **Package**.

In the Save Project dialog box, specify the location to save the project.



- 2 In the **Package** dialog box, verify that **Open output folder when process completes** is selected.

When the deployment process is complete, examine the generated output.

- `for_redistribution` — Folder containing the archive `archiveName.ctf`
- `for_testing` — Folder containing the raw generated files to create the installer
- `PackagingLog.txt` — Log file generated by MATLAB Compiler™

See Also

`deploytool` | `mcc` | `productionServerCompiler`

More About

- Production Server Compiler
- “MATLAB Function Signatures in JSON”

Create and Install a Deployable Archive with Excel Integration For MATLAB Production Server

Supported platform: Windows

This example shows how to create a deployable archive with Excel integration from a MATLAB function. You can then give the generated archive to a system administrator to deploy on MATLAB Production Server.

Create Function In MATLAB

In MATLAB, examine the MATLAB program that you want to package.

For this example, write a function `mymagic.m` as follows.

```
function y = mymagic(x)
```

```
y = magic(x);
```

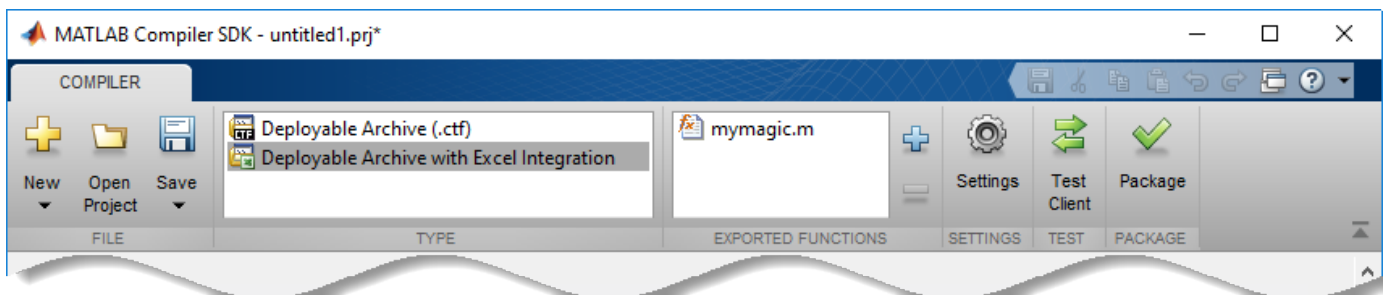
At the MATLAB command prompt, enter `mymagic(3)`.

The output is:

```
ans =
     8     1     6
     3     5     7
     4     9     2
```

Create Deployable Archive with Excel Integration Using Production Server Compiler App

- 1 On the **MATLAB Apps** tab, on the far right of the **Apps** section, click the arrow. In **Application Deployment**, click **Production Server Compiler**. In the **MATLAB Compiler SDK** project window, click **Deployable Archive with Excel integration**.



Alternatively, you can open the **Production Server Compiler** app by entering `productionServerCompiler` at the MATLAB prompt.

- 2 In the **MATLAB Compiler SDK** project window, specify the files of the MATLAB application that you want to deploy.

- 1 In the **Exported Functions** section, click .

- 2 In the **Add Files** window, browse to the example folder, and select the function you want to package.

Click **Open**.

The function `mymagic.m` is added to the list of main files.

Customize the Application and Its Appearance

You can customize your deployable archive with Excel integration, and add more information about the application as follows:

- **Archive information** — Editable information about the deployed archive with Excel integration.
- **Client configuration** — Configure the MATLAB Production Server client. Select the **Default Server URL**, decide wait time-out, and maximum size of response for the client, and provide an optional self-signed certificate for `https`.
- **Additional files required for your archive to run** — Additional files required by the generated archive to run. These files are included in the generated archive installer. See “Manage Required Files in Compiler Project”.
- **Files installed with your archive** — Files that are installed with your archive on the client and server. The files installed on the server include:
 - Generated deployable archive (.ctf)
 - Generated `readme.txt`

The files installed on the client include:

- `mymagic.bas`
- `mymagic.dll`
- `mymagic.xla`
- `readme.txt`
- `ServerConfig.dll`

See “Specify Files to Install with Application”.

- **Options** — The option **Register the resulting component for you only on the development machine** exclusively registers the packaged component for one user on the development machine.

Archive information

mymagic 1.0

Class Name	Method Name
Class1	[y] = mymagic (x) +

Client configuration

Default Server URL

None

MATLAB Production Server URL: Protocol: Host: Port:

Provide your own URL:

Advanced Options

Time the client waits before it times out: Seconds

Maximum size of the response the client accepts: MB

Provide an optional self-signed certificate for https: Browse...

Additional files required for your archive to run (Server only)

+

Files installed with your archive

Server

mymagic.ctf
 readme.txt
+

Client

mymagic.bas
 mymagic.dll
 mymagic.xla
 readme.txt
 ServerConfig.dll
+

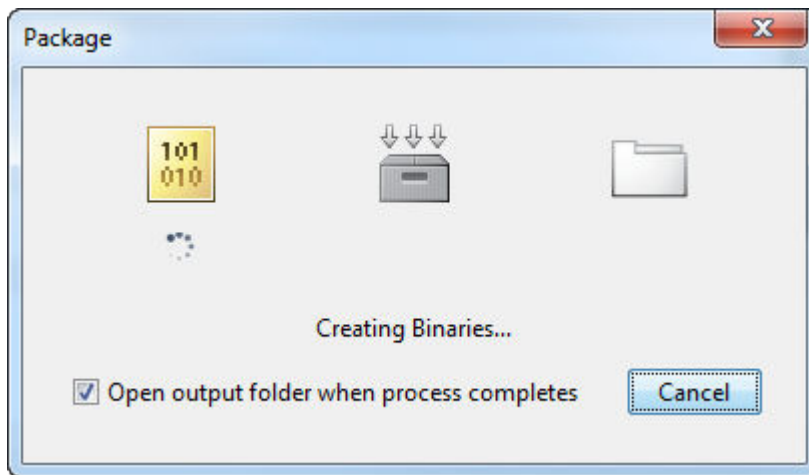
Options

Register the resulting component for you only on the development machine

Package the Application

- 1 To generate the packaged application, click **Package**.

In the Save Project dialog box, specify the location to save the project.



- 2 In the **Package** dialog box, verify that **Open output folder when process completes** is selected.

When the deployment process is complete, examine the generated output.

- `for_redistribution` — Folder containing the installer to distribute the archive on the MATLAB Production Server client and server
- `for_redistribution_files_only` — Folder containing the files required for redistributing the application on the MATLAB Production Server client and server
- `for_testing` — Folder containing the raw generated files to create the installer
- `PackagingLog.txt` — Log file generated by MATLAB Compiler

Install the Deployable Archive with Excel Integration

The archive must be deployed to a MATLAB Production Server instance before the add-in works.

To install the deployable archive on a server instance:

- 1 Locate the archive in the `for_redistribution_files_only\server\` folder.
The file name is similar to `archiveName.ctf`.
- 2 Copy the archive file to the `auto_deploy` folder of the server instance. The server instance automatically deploys it and makes it available to interested clients.

For more information, see “MATLAB Production Server” documentation.

See Also

`productionServerCompiler`

MATLAB Production Server Integration Testing

- “Write a Test Client” on page 2-2
- “Test Client Data Integration Against MATLAB” on page 2-3

Write a Test Client

Integration testing with the MATLAB embedded server instance requires a client that calls the compiled MATLAB functions. The client can be coded using any of the MATLAB Production Server client APIs.

At a minimum, the client must:

- 1** Instantiate the client runtime.
- 2** Connect to the embedded server instance using the port specified in the Production Server Compiler app.
- 3** Call the functions being tested with appropriate data.

For information on writing client code, see:

- “Create a Java Client Using the MWHttpClient Class” on page 7-2
- “Create a C# Client Using MWHttpClient” on page 7-5
- “Create a Python Client” on page 7-8
- “Create a C++ Client” on page 7-9

Test Client Data Integration Against MATLAB

In this section...

“Create a MATLAB Function” on page 2-3
 “Prepare for Testing” on page 2-3
 “Test Using RESTful API” on page 2-6
 “Testing Using Java Client Application” on page 2-10

This example shows you how to test your RESTful API or Java® client for deployment against MATLAB Production Server using the testing interface in the **Production Server Compiler** app. For testing purposes, you will create and use MATLAB function called `addmatrix` that accepts two numeric matrices as inputs and returns their sum as an output.

The testing interface can be accessed by clicking the **Test Client** button in the **Production Server Compiler** app. The **Production Server Compiler** app is part of MATLAB Compiler SDK.

Create a MATLAB Function

- 1 Write a MATLAB function called `addmatrix` that accepts two numeric matrices as inputs and returns their sum as an output. Save this file as `addmatrix.m`.

addmatrix.m

```
function a = addmatrix(a1, a2)
a = a1 + a2;
```

- 2 Test the function at the MATLAB command prompt.

```
a = [10 20 30; 40 50 60];
b = [100 200 300; 400 500 600];
c = addmatrix(a,b)
```

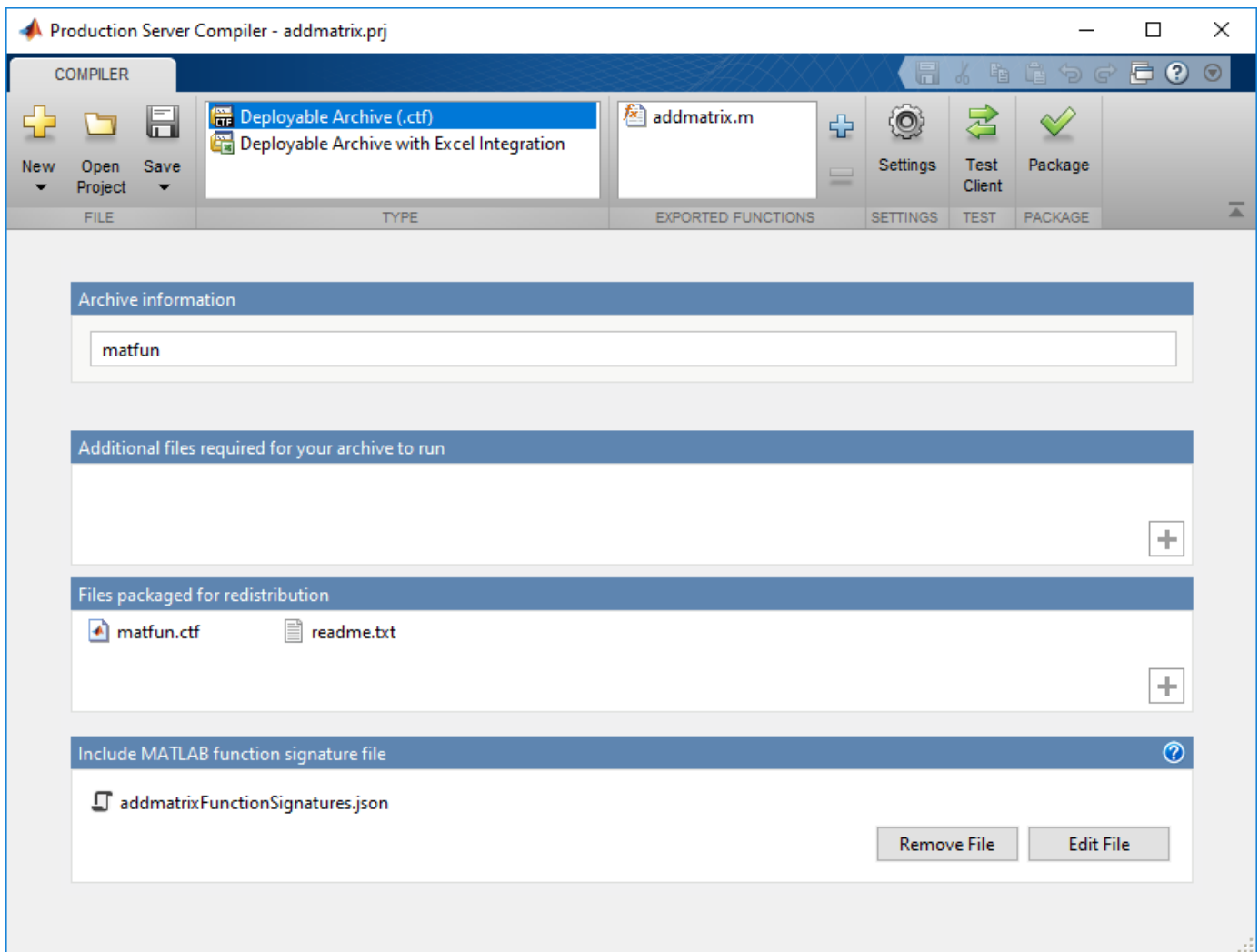
```
c =
```

```
    110    220    330
    440    550    660
```

Prepare for Testing

- 1 Open the **Production Server Compiler** app by typing the following at the MATLAB command prompt:

```
productionServerCompiler
```



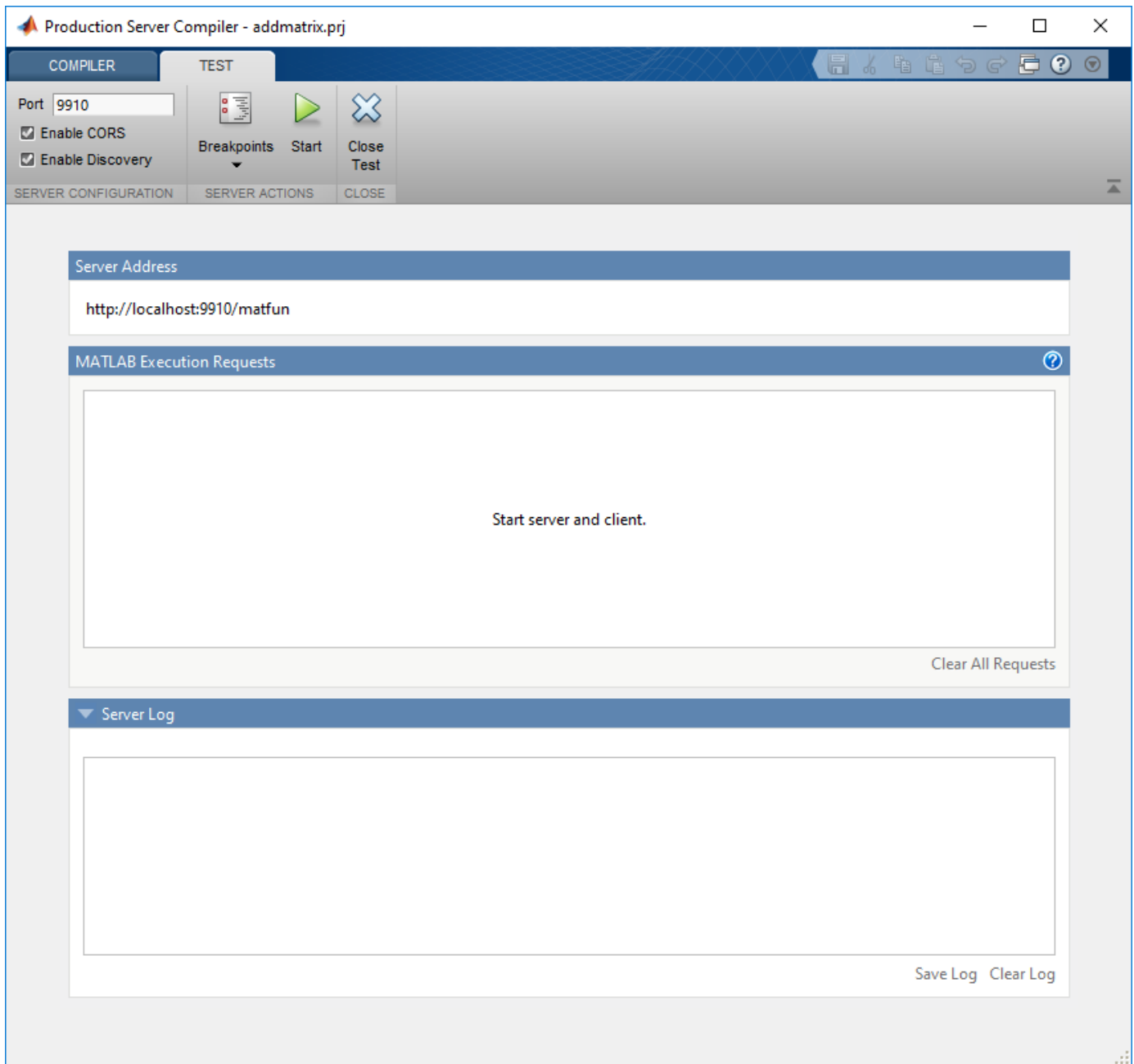
- 2 In the **Type** section of the toolbar, select **Deployable Archive (.ctf)** from the list.
- 3 Specify the MATLAB functions to deploy.
 - a In the **Exported Functions** section of the toolbar, click the plus button.
 - b Using the file explorer, locate and select the `addmatrix.m` file.
- 4 In the section titled **Include MATLAB function signature file**, click the **Create File** button. This will create an editable JSON file that contains the function signatures of the functions included in the archive. By editing this file you can specify argument types and/or sizes of inputs and outputs, and also provide help information for each of the inputs. For more information, see “MATLAB Function Signatures in JSON” (MATLAB Production Server).

If you have an existing JSON file with function signatures, click the **Add Existing File** button to add that file instead of the **Create File** button.

By including this information in your archive, you can use the discovery service functionality on the server.

Note Only the MATLAB Production Server RESTful API supports the discovery service. For more information, see “RESTful API” (MATLAB Production Server).

- 5 Click the **Test Client** button. The app will switch to the **TEST** tab.



- a Check the value of the **Port** field.

It must be:

- an available port
- the same port number the client is using

For this example, the client will use port 9910.

- b Check the box to **Enable CORS**. This option needs to be enabled if you are using a client that uses JavaScript®. By enabling CORS the server will accept requests from different domains.
 - c Check the box to **Enable Discovery**. This option needs to be enabled to use the discovery service. The discovery service returns information about deployed MATLAB functions as a JSON object.
- 6 Click **Start**.

Test Using RESTful API

This example uses the MATLAB “HTTP Interface” to invoke the RESTful API and make requests to the testing interface. You can use other tools such cURL or JavaScript XHR.

Test Discovery Service

- 1 Import the MATLAB HTTP Interface packages, setup the request, and send the request to the testing interface.

```
% Import MATLAB HTTP Interface packages
import matlab.net.*
import matlab.net.http.*
import matlab.net.http.fields.*

% Setup request
requestUri = URI('http://localhost:9910/api/discovery');
options = matlab.net.http.HTTPOptions('ConnectTimeout',20,...
    'ConvertResponse',false);
request = RequestMessage;
request.Header = HeaderField('Content-Type','application/json');
request.Method = 'GET';

% Send request
response = request.send(requestUri, options);
```

- 2 View the response body.

```
response.Body.Data
```

```
ans =
```

```
    {"discoverySchemaVersion":"1.0.0","archives":{"matfun":{"archiveSchemaVersion":"1.1.0",
```

The response body has been snipped to fit the page. A formatted version of the response body can be found by expanding ans.

ans

```
{
  "discoverySchemaVersion": "1.0.0",
  "archives": {
    "matfun": {
      "archiveSchemaVersion": "1.1.0",
      "archiveUuid": "",
      "functions": {
        "addmatrix": {
          "signatures": [
            {
              "help": "",
```



```
body = MessageBody;
a = [10 20 30; 40 50 60];
b = [100 200 300;400 500 600];
payload = mps.json.encodedrequest({a,b});
body.Payload = payload;

% Setup request
requestUri = URI('http://localhost:9910/matfun/addmatrix');
options = matlab.net.http.HTTPOptions('ConnectTimeout',20,...
    'ConvertResponse',false);
request = RequestMessage;
request.Header = HeaderField('Content-Type','application/json');
request.Method = 'POST';
request.Body = body;

% Send request
response = request.send(requestUri, options)
```

3 View the response body.

```
response.Body.Data

ans =

    {"lhs": [[[110,220,330],[440,550,660]]]}
```

To test using JavaScript XHR you can use the following code:

JavaScript XHR Code for Testing Data Exchange

```
var data = JSON.stringify({
    "rhs": [[[10,20,30],[40,50,60]],[[100,200,300],[400,500,600]]],
    "nargout": 1,
    "outputFormat": {
        "mode": "small",
        "nanType": "string"
    }
});
var xhr = new XMLHttpRequest();
xhr.addEventListener("readystatechange", function () {
    if (this.readyState === 4) {
        console.log(this.responseText);
    }
});
xhr.open("POST", "http://localhost:9910/matfun/addmatrix");
xhr.setRequestHeader("Content-Type", "application/json");
xhr.send(data);
```

Examine Data

- 1** Switch to the **Production Server Compiler** app.

ID	Function	Status
0	[a]=addmatrix(a1,a2)	✓ Complete

Input				Output			
Name	Size	Bytes	Class	Name	Size	Bytes	Class
a1	2x3	48	double array	a	2x3	48	double array
a2	2x3	48	double array				

Clear All Requests

- 2 In the testing interface, under **MATLAB Execution Requests**, click the completed message in the app to see the values exchanged between the client and MATLAB.
- 3 Click **Input** to view the arrays passed into MATLAB.
- 4 Click **Output** to view the array returned to the client.

Set Breakpoints

- 1 In the testing interface of the **Production Server Compiler**, click **Breakpoints > Break on MATLAB function entry**.
- 2 In the separate MATLAB session, resend a POST request to the server.
- 3 When the MATLAB editor opens, note that a breakpoint is set at the first line in the function and that processing has paused at the breakpoint.

The screenshot shows the MATLAB IDE with the following components:

- Editor - addmatrix.m**:


```

1 function a = addmatrix(a1, a2)
2 a = a1 + a2;
```

 A red circle with a green arrow indicates a breakpoint is set on line 2.
- Workspace - addmatrix**:

Name	Value
a1	[10,20,30;40,50,60]
a2	[100,200,300;400,500,600]
- Command Window**:


```

2 a = a1 + a2;
```

You now can use all of the MATLAB debugging tools to step through your function.

Note You can create a timeout error in the client if you take a long time stepping through the MATLAB function.

- 4 Note that variables **a1** and **a2** are displayed in the MATLAB workspace.

- 5 In the MATLAB editor, click **Continue** to complete the debug process.

The **Server Requests** section of the app shows that the request completed successfully.

- 6 Click **Stop** to shutdown the test server.
- 7 Click **Close Test**.

Testing Using Java Client Application

- 1 Create a Java file `MPSClientExample.java` with following client code:

MPSClientExample.java

```
import java.net.URL;
import java.io.IOException;
import com.mathworks.mps.client.MWClient;
import com.mathworks.mps.client.MWHttpClient;
import com.mathworks.mps.client.MATLABException;

interface MATLABAddMatrix
{
    double[][] addmatrix(double[][] a1, double[][] a2)
        throws MATLABException, IOException;
}

public class MPSClientExample {

    public static void main(String[] args){

        double[][] a1={{1,2,3},{3,2,1}};
        double[][] a2={{4,5,6},{6,5,4}};

        MWClient client = new MWHttpClient();

        try{
            MATLABAddMatrix m = client.createProxy(new URL("http://localhost:9910/addmatrix"),
                MATLABAddMatrix.class);
            double[][] result = m.addmatrix(a1,a2);

            // Print the magic square

            printResult(result);

        }catch(MATLABException ex){

            // This exception represents errors in MATLAB
            System.out.println(ex);
        }catch(IOException ex){

            // This exception represents network issues.
            System.out.println(ex);
        }finally{

            client.close();
        }
    }

    private static void printResult(double[][] result){
        for(double[] row : result){
            for(double element : row){
                System.out.print(element + " ");
            }
            System.out.println();
        }
    }
}
```

- 2 At the system command prompt, compile the Java client code using the `javac` command.

```
javac -classpath "matlabroot\toolbox\compiler_sdk\mps_clients\java\mps_client.jar" MPSClientExample.java
```

- 3 At the system command prompt, run the Java client.

```
java -classpath .;"matlabroot\toolbox\compiler_sdk\mps_clients\java\mps_client.jar" MPSClientExample
```

Note You cannot run the Java client from the MATLAB command prompt.

The application returns the following at the console:

```
110.0  220.0  330.0
440.0  550.0  660.0
```

You can debug the data exchanged between the client and MATLAB using the same steps listed under “Test Using RESTful API” on page 2-6.

See Also

Related Examples

- “Write a Test Client” on page 2-2
- “Package Deployable Archives with Production Server Compiler App”

MATLAB Production Server Excel Add-In

Data Marshaling Rules

In this section...
“Default Marshaling Rules” on page 3-2
“Change Rules for Marshaling Data into MATLAB” on page 3-2
“Change Rules for Marshaling Data into Excel” on page 3-2

Default Marshaling Rules

These types of data do not have natural mappings between MATLAB and Excel:

- Dates: Excel has a special data type for dates, and MATLAB does not.
- Blank cells: MATLAB has no equivalent construct for a blank cell in an Excel spread sheet.

If you do not change the marshaling rules when compiling the add-in, the rules for marshaling Excel data into MATLAB are:

- Excel dates are marshaled into MATLAB doubles.
- Empty cells are marshaled into zeros.

If you do not change the marshaling rules when compiling the add-in, the rules for marshaling MATLAB data into Excel are:

- MATLAB NaNs are marshaled into Visual Basic® #QNANs.
- MATLAB does not return any Excel dates.

Change Rules for Marshaling Data into MATLAB

You can change how dates and empty cells are marshaled into MATLAB when compiling the add-in:

- Excel dates can be marshaled as MATLAB character arrays.
- Empty cells can be marshaled as MATLAB NaNs.

To change the marshaling rules:

- 1** In the class mapper portion of the **MATLAB Compiler** project window, select the signature of the function you want to modify.
- 2** Select **Data Conversion Properties** from the context menu.
- 3** Select the input argument rules to change.
- 4** Click outside of the dialog box to close it.

Change Rules for Marshaling Data into Excel

You can change how dates and NaNs are marshaled into Excel when compiling the add-in:

- MATLAB NaNs can be converted into zeros.
- MATLAB numeric values can be converted into Excel dates.

Note To see a date in the expected format, ensure that the Excel cell is formatted to display its contents in a date format.

To change the marshaling rules:

- 1** In the class mapper portion of the **MATLAB Compiler** project window, select the signature of the function you want to modify.
- 2** Select **Data Conversion Properties** from the context menu.
- 3** Select the output argument rules to change.
- 4** Click outside of the dialog box to close it.

See Also

MATLAB Production Server Excel Add-In

XLA File Not Generated

The compiler may not generate the *projName.xla* file for various reasons, including that Excel is not configured to trust access to the VBA project object model. When this happens, you can install the add-in by importing the *projName.bas* file into the workbook's Visual Basic project.

Server Configuration Add-in Not Enabled

If your trust settings in Excel are configured to either disable all add-ins or to require add-ins to be published by a trusted publisher, it is possible that the **Configure MATLAB Production Server** add-in is not available after installation. In most cases, the add-in is installed but disabled.

To check if the add-in is installed in Excel:

- 1** Select **File>Options**.
- 2** Select **Add-Ins**.
- 3** Look for `ServerConfig.Connect` in the list of disabled add-ins.

You can enable the add-in by adjusting the trust settings in Excel.

Error Using a Variable Number of Outputs

If your add-in throws the error:

```
Error in myfunc: Object reference not set to an instance of an object
```

The likely cause is that the MATLAB function used by the add-in returns a variable number of outputs.

Add-ins using code run on a MATLAB Production Server instance do not support MATLAB functions that return a variable number of outputs. You can either rewrite your MATLAB function to return a fixed number of outputs, or you can create an add-in that runs locally to your Excel installation.

Functions

compiler.build.productionServerArchive

Create an archive for deployment to MATLAB Production Server

Syntax

```
compiler.build.productionServerArchive(FunctionFiles)
compiler.build.productionServerArchive(FunctionFiles,Name,Value)
compiler.build.productionServerArchive(opts)
results = compiler.build.productionServerArchive( ___ )
```

Description

`compiler.build.productionServerArchive(FunctionFiles)` creates a deployable archive using the MATLAB functions specified by `FunctionFiles`.

`compiler.build.productionServerArchive(FunctionFiles,Name,Value)` creates a deployable archive with additional options specified as one or more name-value pairs. Options include the archive name, JSON function signatures, and output directory.

`compiler.build.productionServerArchive(opts)` creates a deployable archive with options specified by a `compiler.build.ProductionServerArchiveOptions` object `opts`. You cannot specify any other options using name-value pairs.

`results = compiler.build.productionServerArchive(___)` returns build information as a `compiler.build.Results` object using any of the input arguments in previous syntaxes. Build information includes the build type, the path to the compiled archive, and build options.

Examples

Create a Deployable Archive

Create a deployable server archive on a Windows operating system.

Write a MATLAB function that generates a magic square. Save the function in a file named `mymagic.m`.

```
% mymagic.m
function out = mymagic(in)

if ischar(in)
    in=str2double(in);
end
out = magic(in)
```

Build a production server archive using the `compiler.build.productionServerArchive` command.

```
compiler.build.productionServerArchive('mymagic.m');
```

This syntax generates the following files within a folder named `mymagicproductionServerArchive` in your current working directory:

- `mymagic.ctf`—Deployable production server archive file.
- `mccExcludedFiles.log`—Log file that contains a list of any toolbox functions that were not included in the application. For more information on non-supported functions, see MATLAB Compiler Limitations.
- `readme.txt`—Readme file that contains information on deployment prerequisites and the list of files to package for deployment.
- `requiredMCRProducts.txt`—Text file that contains product IDs of products required by MATLAB Runtime to run the application.

Customize Deployable Archive Using Name-Value Pairs

Customize a production server archive using name-value pairs on a Windows system.

Build a production server archive using the `compiler.build.productionServerArchive` command.

```
compiler.build.productionServerArchive(["mymagic.m", "myfunc.m"], ...
    'ArchiveName', 'MagicApp', ...
    'FunctionSignatures', 'signatures.json',)
```

Customize Multiple Deployable Archives Using Options Object

Customize multiple production server archives using a `compiler.build.ProductionServerArchiveOptions` object on a Windows system to specify a common output directory, disable automatically including data files, and enable build verbosity.

Create a `ProductionServerArchiveOptions` object.

```
opts = compiler.build.ProductionServerArchiveOptions('example.m', ...
    'OutputDir', 'D:\Documents\MATLAB\work\ProductionServerBatch', ...
    'AutoDetectDataFiles', 'Off', ...
    'Verbose', 'on');
```

`opts =`

`ProductionServerArchiveOptions` with properties:

```
    ArchiveName: 'example'
    FunctionFiles: {'D:\Documents\MATLAB\work\example.m'}
    FunctionSignatures: ''
    AdditionalFiles: {}
    AutoDetectDataFiles: off
    Verbose: on
    OutputDir: 'D:\Documents\MATLAB\work\ProductionServerBatch'
```

Pass the `ProductionServerArchiveOptions` object as an input to the build function.

```
compiler.build.productionServerArchive(opts);
```

You can modify property values of an existing `ProductionServerArchiveOptions` object using dot notation. For example, change the input file to `example2.m`.

```
opts.FunctionFiles = 'example2.m';
```

This allows you to compile multiple archives using the same options object.

Get Build Information From Deployable Archive

Create a production server archive and save the build type, path to the archive file, and build options to a `compiler.build.Results` object.

Save the `compiler.build.productionServerArchive` information to a `Results` object by declaring an output variable.

```
results = compiler.build.productionServerArchive('mymagic.m')
```

```
results =
```

```
Results with properties:
```

```
BuildType: 'productionServerArchive'  
Files: 'D:\Documents\MATLAB\work\mymagicproductionServerArchive\mymagic.ctf'  
Options: [1x1 compiler.build.ProductionServerArchiveOptions]
```

Input Arguments

FunctionFiles — MATLAB function files

character vector | string scalar | cell array of character vectors | string array

List of files implementing MATLAB functions, specified as a character vector, a string scalar, a string array, or a cell array of character vectors. File paths can be relative to the current working directory or absolute. Files must have a `.m` extension.

Example: `["myfunc1.m", "myfunc2.m"]`

Data Types: `char` | `string` | `cell`

opts — Production server options object

`compiler.build.ProductionServerArchiveOptions` object

Production server archive build options, specified as a `compiler.build.ProductionServerArchiveOptions` object.

Name-Value Pair Arguments

Specify optional comma-separated pairs of `Name`, `Value` arguments. `Name` is the argument name and `Value` is the corresponding value. `Name` must appear inside quotes. You can specify several name and value pair arguments in any order as `Name1, Value1, ..., NameN, ValueN`.

Example: `'Verbose', 'on'`

ArchiveName — Name of generated deployable archive

character vector | string scalar

Name of the generated production server archive, specified as a character vector or a string scalar. The default value is the first file listed in the `FunctionFiles` argument.

Example: `'ArchiveName', 'MyMagic'`

Data Types: `char` | `string`

AutoDetectDataFiles — Automatically include data files`'on'` (default) | on/off logical value

Automatically include data files, specified as `'on'` or `'off'`, or as numeric or logical 1 (`true`) or 0 (`false`). A value of `'on'` is equivalent to `true`, and `'off'` is equivalent to `false`. Thus, you can use the value of this property as a logical value. The value is stored as an on/off logical value of type `matlab.lang.OnOffSwitchState`.

- If you set this property to `'on'`, then data files that are provided as inputs to certain functions (`load`, `fopen`, etc) are automatically included with the production server archive.
- If you set this property to `'off'`, then data files must be added to the application using the `AdditionalFiles` property.

Example: `'AutoDetectDataFiles','Off'`

Data Types: logical

FunctionSignatures — Path to JSON file

character vector | string scalar

Path to a JSON file that details the JSON signatures of all functions listed in `FunctionFiles`. For information on how to specify function signatures, see “MATLAB Function Signatures in JSON” (MATLAB Production Server).

Example: `'FunctionSignatures','D:\Documents\MATLAB\work\magicapp\signatures.json'`

Data Types: char | string

OutputDir — Path to output directory`'ArchiveNameproductionServerArchive'` (default) | character vector | string scalar

Path to the folder where the production server archive files are saved, specified as a character vector or a string scalar. The path can be relative to the current working directory or absolute.

If no path is specified, a build folder is created in the current working directory with the name `ArchiveNameproductionServerArchive`.

Example: `'OutputDir','D:\Documents\MATLAB\work\MyMagicproductionServerArchive'`

Data Types: char | string

Verbose — Build verbosity`'off'` (default) | on/off logical value

Build verbosity, specified as `'on'` or `'off'`, or as numeric or logical 1 (`true`) or 0 (`false`). A value of `'on'` is equivalent to `true`, and `'off'` is equivalent to `false`. Thus, you can use the value of this property as a logical value. The value is stored as an on/off logical value of type `matlab.lang.OnOffSwitchState`.

- If you set this property to `'on'`, then the MATLAB Command Window displays progress information indicating code generation stages and compiler output during the build process.
- If you set this property to `'off'`, then the command window does not display progress information.

Example: `'Verbose','Off'`

Data Types: `logical`

Output Arguments

results — Build results

`compiler.build.Results` object

Build results, returned as a `compiler.build.Results` object. The `Results` object contains the build type ('`productionServerArchive`'), the path to the deployable archive file (`.ctf`), and the build options, specified as a `ProductionServerArchiveOptions` object.

See Also

`productionServerCompiler`

Introduced in R2020b

compiler.build.ProductionServerArchiveOptions

Create a deployable archive options object

Syntax

```
opts = compiler.build.ProductionServerArchiveOptions(functionfiles)
opts = compiler.build.ProductionServerArchiveOptions(functionfiles,
Name,Value)
```

Description

`opts = compiler.build.ProductionServerArchiveOptions(functionfiles)` creates a `ProductionServerArchiveOptions` object using the MATLAB functions specified by `functionfiles`. The `ProductionServerArchiveOptions` object is passed as an input to the `compiler.build.productionServerArchive` function.

`opts = compiler.build.ProductionServerArchiveOptions(functionfiles, Name,Value)` creates a `ProductionServerArchiveOptions` object using `functionfiles`. The archive can be customized using optional name-value pairs.

Examples

Create Deployable Archive Options Object

Create a `ProductionServerArchiveOptions` object on a Windows system from a function file named `example.m`.

```
opts = compiler.build.ProductionServerArchiveOptions('example.m')
```

```
opts =
```

```
ProductionServerArchiveOptions with properties:
```

```
    ArchiveName: 'example'
    FunctionFiles: {'D:\Documents\MATLAB\work\example.m'}
    FunctionSignatures: ''
    AdditionalFiles: {}
    AutoDetectDataFiles: on
    OutputDir: '.\exampleproductionServerArchive'
    Verbose: off
```

You can modify property values of an existing `ProductionServerArchiveOptions` object using dot notation.

```
opts.Verbose = 'on'
```

```
opts =
```

```
ProductionServerArchiveOptions with properties:
```

```
    ArchiveName: 'example'
```

```

        FunctionFiles: {'D:\Documents\MATLAB\work\example.m'}
    FunctionSignatures: ''
        AdditionalFiles: {}
    AutoDetectDataFiles: on
        OutputDir: '.\exampleproductionServerArchive'
        Verbose: on

```

Build a production server archive using the `compiler.build.productionServerArchive` command.

```
compiler.build.productionServerArchive(opts);
```

Customize Deployable Archive Options Object Using Name-Value Pairs

Create a `ProductionServerArchiveOptions` object on a Windows system from the function files `myfunc1.m` and `myfunc2.m`.

```
opts = compiler.build.ProductionServerArchiveOptions(["myfunc1.m","myfunc2.m"],...
    'ArchiveName','MyServerApp',...
    'OutputDir','D:\Documents\MATLAB\work\ProductionServer\',...
    'AutoDetectDataFiles','off')
```

```
opts =
```

ProductionServerArchiveOptions with properties:

```

        ArchiveName: 'MyServerApp'
        FunctionFiles: {2×1 cell}
    FunctionSignatures: ''
        AdditionalFiles: {}
    AutoDetectDataFiles: off
        OutputDir: 'D:\Documents\MATLAB\work\ProductionServer\'
        Verbose: off

```

Input Arguments

functionfiles — MATLAB function files

character vector | string scalar | cell array of character vectors | string array

List of files implementing MATLAB functions, specified as a character vector, a string scalar, a string array, or a cell array of character vectors. Files must have a `.m` extension.

Example: {'myProductionServerFunction.m', 'mySubFunction.m'}

Data Types: char | string | cell

Name-Value Pair Arguments

Specify optional comma-separated pairs of `Name`, `Value` arguments. `Name` is the argument name and `Value` is the corresponding value. `Name` must appear inside quotes. You can specify several name and value pair arguments in any order as `Name1, Value1, ..., NameN, ValueN`.

Example: 'Verbose', 'on'

ArchiveName — Deployable archive name

character vector | string scalar

Name of the generated production server archive, specified as a character vector or a string scalar. The default value is the first file listed in the `functionfiles` argument.

Example: `'ArchiveName', 'MyMagic'`

Data Types: `char` | `string`

AutoDetectDataFiles — Automatically include data files

`'on'` (default) | on/off logical value

Automatically include data files, specified as `'on'` or `'off'`, or as numeric or logical `1` (`true`) or `0` (`false`). A value of `'on'` is equivalent to `true`, and `'off'` is equivalent to `false`. Thus, you can use the value of this property as a logical value. The value is stored as an on/off logical value of type `matlab.lang.OnOffSwitchState`.

- If you set this property to `'on'`, then data files that are provided as inputs to certain functions (`load`, `fopen`, etc) are automatically included with the production server archive.
- If you set this property to `'off'`, then data files must be added to the production server archive using the `AdditionalFiles` property.

Example: `'AutoDetectDataFiles', 'Off'`

Data Types: `logical`

FunctionSignatures — Function signatures

character vector | string scalar

Path to a JSON file that details the signatures of all functions listed in `functionfiles`. For information on how to specify function signatures, see “MATLAB Function Signatures in JSON” (MATLAB Production Server).

Example: `'FunctionSignatures', 'D:\Documents\MATLAB\work\magicapp\nsignatures.json'`

Data Types: `char` | `string`

OutputDir — Path to output directory

`'ArchiveNameProductionServerArchive'` (default) | character vector | string scalar

Path to the folder where the production server archive files are saved, specified as a character vector or a string scalar. The path can be relative to the current working directory or absolute.

If no path is specified, a build folder is created in the current working directory with the name `ArchiveNameproductionServerArchive`.

Example: `'OutputDir', 'D:\Documents\MATLAB\work\MyMagicproductionServerArchive'`

Verbose — Build verbosity

`'off'` (default) | on/off logical value

Build verbosity, specified as `'on'` or `'off'`, or as numeric or logical `1` (`true`) or `0` (`false`). A value of `'on'` is equivalent to `true`, and `'off'` is equivalent to `false`. Thus, you can use the value of this property as a logical value. The value is stored as an on/off logical value of type `matlab.lang.OnOffSwitchState`.

- If you set this property to `'on'`, then the MATLAB Command Window displays progress information indicating code generation stages and compiler output during the build process.

- If you set this property to 'off', then the command window does not display progress information.

Example: 'Verbose', 'Off'

Data Types: logical

Output Arguments

opts — Production server archive build options

ProductionServerArchiveOptions object

Production server archive build options, returned as a ProductionServerArchiveOptions object.

See Also

`compiler.build.productionServerArchive` | `productionServerCompiler`

Introduced in R2020b

compiler.build.Results

Compiler build results object

Description

A `compiler.build.Results` object contains the build type, files, and build options of a `compiler.build` function.

All `Results` properties are read-only. You can use dot notation to query these properties.

Creation

There are several ways to create a `compiler.build.Results` object.

- Create a standalone application using `compiler.build.standaloneApplication`.
- Create a standalone Windows application using `compiler.build.standaloneWindowsApplication`.
- Create a web app archive using `compiler.build.webAppArchive`.
- Create a production server archive using `compiler.build.productionServerArchive`.

Properties

BuildType — Build type

'standaloneApplication' | 'standaloneWindowsApplication' | 'webAppArchive' | 'productionServerArchive'

This property is read-only.

The name of the `compiler.build` function used to generate the results, specified as one of these character vectors:

- 'standaloneApplication'—indicates results from the `compiler.build.standaloneApplication` function.
- 'standaloneWindowsApplication'—indicates results from the `compiler.build.standaloneWindowsApplication` function.
- 'webAppArchive'—indicates results from the `compiler.build.webAppArchive` function.
- 'productionServerArchive'—indicates results from the `compiler.build.productionServerArchive` function.

Example: 'productionServerArchive'

Data Types: char

Files — Paths to build files

cell array of character vectors

This property is read-only.

Paths to the compiled build files of the associated `compiler.build` function, specified as a cell array of character vectors.

Build Type	Files
<code>standaloneApplication</code>	2×1 cell array <pre>{'path\to\ExecutableName.exe'} {'path\to\readme.txt'}</pre>
<code>standaloneWindowsApplication</code>	3×1 cell array <pre>{'path\to\ExecutableName.exe'} {'path\to\splash.png'} {'path\to\readme.txt'}</pre>
<code>webAppArchive</code>	1×1 cell array <pre>{'path\to\ArchiveName.ctf'}</pre>
<code>productionServerArchive</code>	1×1 cell array <pre>{'path\to\ArchiveName.ctf'}</pre>

Example: `{'D:\Documents\MATLAB\work\MagicSquarewebAppArchive\MagicSquare.ctf'}`

Data Types: `cell`

Options – Build options

`StandaloneApplicationOptions` | `WebAppArchiveOptions` | `ProductionServerArchiveOptions`

This property is read-only.

Build options from the associated `compiler.build` function, specified as an options object of the corresponding build type.

Build Type	Options
<code>standaloneApplication</code>	<code>StandaloneApplicationOptions</code>
<code>standaloneWindowsApplication</code>	<code>StandaloneApplicationOptions</code>
<code>webAppArchive</code>	<code>WebAppArchiveOptions</code>
<code>productionServerArchive</code>	<code>ProductionServerArchiveOptions</code>

Examples

Get Build Information From Standalone Application

Create a standalone application and save information about the build type, included files, and build options to a `compiler.build.Results` object.

Save the `compiler.build.standaloneApplication` information to a `Results` object by declaring an output variable.

```
results = compiler.build.standaloneApplication('mymagic.m')
results =
```

Results with properties:

```
BuildType: 'standaloneApplication'
Files: {2×1 cell}
Options: [1×1 compiler.build.StandaloneApplicationOptions]
```

The Files property contains the paths to the generated standalone executable and readme files.

Get Build Information From Standalone Windows Application

Create a standalone Windows application and save information about the build type, included files, and build options to a `compiler.build.Results` object on a Windows system.

Save the `compiler.build.standaloneWindowsApplication` information to a `Results` object by declaring an output variable.

```
results = compiler.build.standaloneWindowsApplication('mymagic.m', 'AdditionalFiles', ['myvars.mat', 'mysubfunction.m'])
```

```
results =
```

Results with properties:

```
BuildType: 'standaloneWindowsApplication'
Files: {3×1 cell}
Options: [1×1 compiler.build.StandaloneApplicationOptions]
```

The Files property contains the paths to the generated standalone executable, splash image, and readme files.

Get Build Information From Web App Archive

Create a web app archive and save the build type, path to the archive file, and build options to a `compiler.build.Results` object.

Save the `compiler.build.webAppArchive` information to a `Results` object by declaring an output variable.

```
results = compiler.build.webAppArchive('example.mlapp')
```

```
results =
```

Results with properties:

```
BuildType: 'webAppArchive'
Files: {'D:\Documents\MATLAB\work\examplewebAppArchive\example.ctf'}
Options: [1×1 compiler.build.WebAppArchiveOptions]
```

Get Build Information From Deployable Archive

Create a production server archive and save the build type, path to the archive file, and build options to a `compiler.build.Results` object.

Save the `compiler.build.productionServerArchive` information to a `Results` object by declaring an output variable.

```
results = compiler.build.productionServerArchive('mymagic.m')
```

```
results =
```

```
Results with properties:
```

```
BuildType: 'productionServerArchive'  
Files: 'D:\Documents\MATLAB\work\mymagicproductionServerArchive\mymagic.ctf'  
Options: [1x1 compiler.build.ProductionServerArchiveOptions]
```

See Also

`compiler.build.productionServerArchive` | `compiler.build.standaloneApplication` | `compiler.build.standaloneWindowsApplication` | `compiler.build.webAppArchive`

Introduced in R2020b

productionServerCompiler

Test, build and package functions for use with MATLAB Production Server

Syntax

```
productionServerCompiler  
productionServerCompiler project_name
```

Description

`productionServerCompiler` opens the Production Server Compiler app for the creation of a new compiler project.

`productionServerCompiler project_name` opens the Production Server Compiler app with the project preloaded.

Examples

Create a New Production Server Project

Open the Production Server Compiler app to create a new project.

```
productionServerCompiler
```

Input Arguments

project_name — name of the project to be compiled

character array or string

Specify the name of a previously saved project. The project must be on the current path.

Compatibility Considerations

-build and -package options will be removed

Not recommended starting in R2020a

The `-build` and `-package` options will be removed. To generate deployable archives, use the `mcc` command or the **Production Server Compiler** app.

Introduced in R2014a

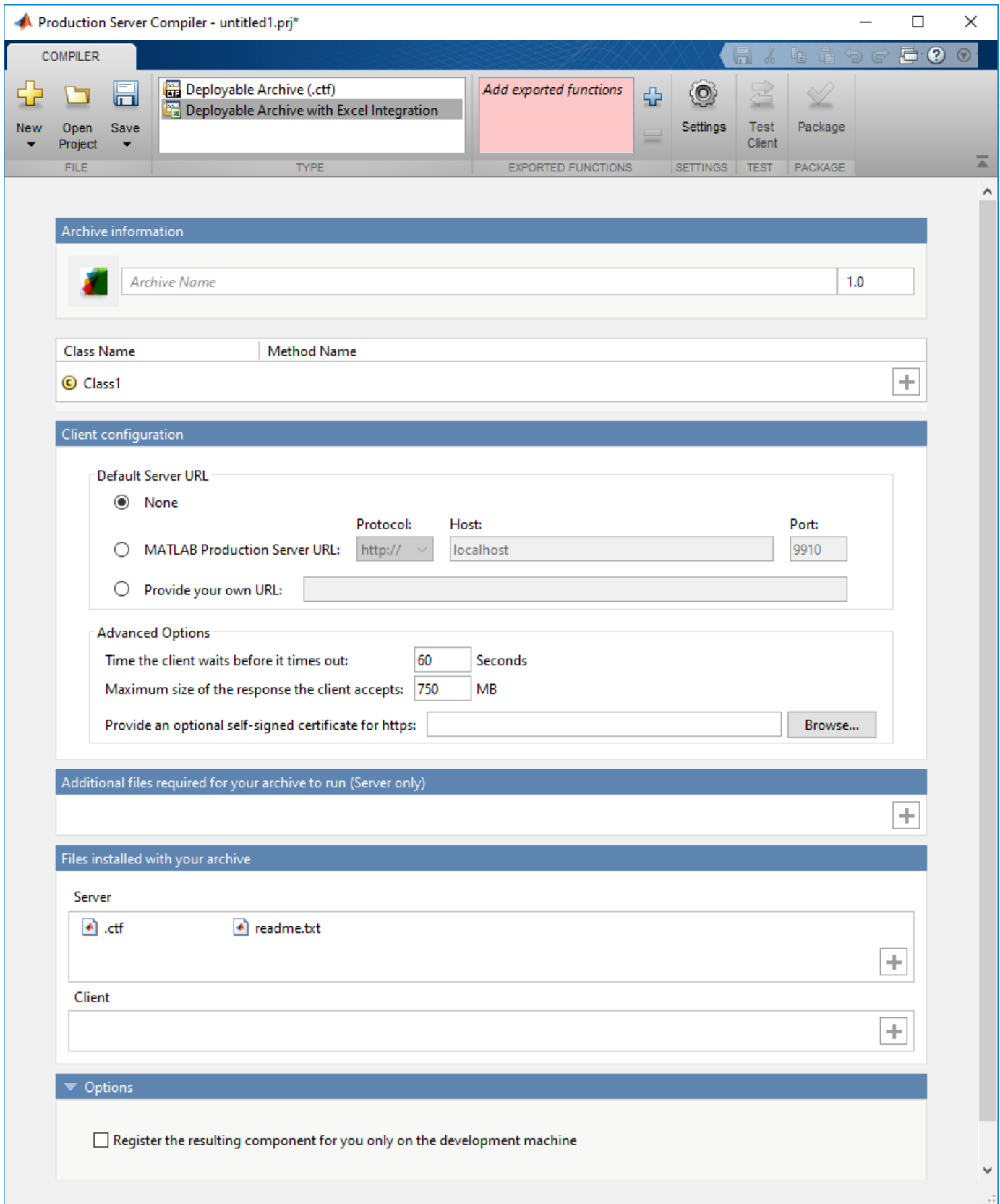
Apps

Production Server Compiler

Package MATLAB programs for deployment to MATLAB Production Server

Description

The **Production Server Compiler** app tests the integration of client code with MATLAB functions. It also packages MATLAB functions into archives for deployment to MATLAB Production Server.



Open the Production Server Compiler App

- MATLAB Toolstrip: On the **Apps** tab, under **Application Deployment**, click the app icon.
- MATLAB command prompt: Enter `productionServerCompiler`.

Examples

- “Create a deployable archive for MATLAB Production Server”
- “Create and Install a Deployable Archive with Excel Integration For MATLAB Production Server”

Parameters

type — type of archive generated

Deployable Archive | Deployable Archive with Excel Integration

Type of archive to generate as a character array.

exported functions — functions to package

list of character arrays

Functions to package as a list of character arrays.

archive information — name of the archive

character array

Name of the archive as a character array.

files required for your archive to run — files that must be included with archive

list of files

Files that must be included with archive as a list of files.

files packaged with the archive — optional files installed with archive

list of files

Optional files installed with archive as a list of files.

Settings

Additional parameters passed to MCC — flags controlling the behavior of the compiler

character array

Flags controlling the behavior of the compiler as a character array.

testing files — folder where files for testing are stored

character array

Folder where files for testing are stored as a character array.

end user files — folder where files for building a custom installer are stored

character array

Folder where files for building a custom installer are stored are stored as a character array.

packaged installers — folder where generated installers are stored

character array

Folder where generated installers are stored as a character array.

Programmatic Use

productionServerCompiler

See Also

Topics

“Create a deployable archive for MATLAB Production Server”

“Create and Install a Deployable Archive with Excel Integration For MATLAB Production Server”

Introduced in R2013b

Client Programming

Create a Java Client Using the MWHttpClient Class

This example shows how to write a MATLAB Production Server client using the Java client API. In your Java code, you will:

- Define a Java interface that represents the MATLAB function.
- Instantiate a proxy object to communicate with the server.
- Call the deployed function in your Java code.

To create a Java MATLAB Production Server client application:

- 1** Create a new file called `MPSClientExample.java`.
- 2** Using a text editor, open `MPSClientExample.java`.
- 3** Add the following import statements to the file:

```
import java.net.URL;
import java.io.IOException;
import com.mathworks.mps.client.MWClient;
import com.mathworks.mps.client.MWHttpClient;
import com.mathworks.mps.client.MATLABException;
```

- 4** Add a Java interface that represents the deployed MATLAB function.

The interface for the `addmatrix` function

```
function a = addmatrix(a1, a2)
```

```
a = a1 + a2;
```

looks like this:

```
interface MATLABAddMatrix {
    double[][] addmatrix(double[][] a1, double[][] a2)
        throws MATLABException, IOException;
}
```

When creating the interface, note the following:

- You can give the interface any valid Java name.
 - You must give the method defined by this interface the same name as the deployed MATLAB function.
 - The Java method must support the same inputs and outputs supported by the MATLAB function, in both type and number. For more information about data type conversions and how to handle more complex MATLAB function signatures, see “Java Client Programming” (MATLAB Production Server).
 - The Java method must handle MATLAB exceptions and I/O exceptions.
- 5** Add the following class definition:

```
public class MPSClientExample
{
}
```

This class now has a single main method that calls the generated class.

- 6** Add the `main()` method to the application.


```
public static void main(String[] args)
{
}
```

- 7** Add the following code to the top of the main() method:

```
double[][] a1={{1,2,3},{3,2,1}};
double[][] a2={{4,5,6},{6,5,4}};
```

These statements initialize the variables used by the application.

- 8** Instantiate a client object using the MWHttpClient constructor.

```
MWClient client = new MWHttpClient();
```

This class establishes an HTTP connection between the application and the server instance.

- 9** Call the client object's createProxy method to create a dynamic proxy.

You must specify the URL of the deployable archive and the name of your interface class as arguments:

```
MATLABAddMatrix m = client.createProxy(new URL("http://localhost:9910/addmatrix"),
                                         MATLABAddMatrix.class);
```

The URL value ("http://localhost:9910/addmatrix") used to create the proxy contains three parts:

- the server address (localhost).
- the port number (9910).
- the archive name (addmatrix)

For more information about the createProxy method, see the Javadoc included in the *matlabroot/toolbox/compiler_sdk/mps_client* folder.

- 10** Call the deployed MATLAB function in your Java application by calling the public method of the interface.

```
double[][] result = m.addmatrix(a1,a2);
```

- 11** Call the client object's close() method to free system resources.

```
client.close();
```

- 12** Save the Java file.

The completed Java file should resemble the following:

```
import java.net.URL;
import java.io.IOException;
import com.mathworks.mps.client.MWClient;
import com.mathworks.mps.client.MWHttpClient;
import com.mathworks.mps.client.MATLABException;

interface MATLABAddMatrix
{
    double[][] addmatrix(double[][] a1, double[][] a2)
        throws MATLABException, IOException;
}

public class MPSClientExample {

    public static void main(String[] args){

        double[][] a1={{1,2,3},{3,2,1}};
        double[][] a2={{4,5,6},{6,5,4}};

        MWClient client = new MWHttpClient();
```

```
try{
    MATLABAddMatrix m = client.createProxy(new URL("http://localhost:9910/addmatrix"),
                                           MATLABAddMatrix.class);
    double[][] result = m.addmatrix(a1,a2);

    // Print the resulting matrix
    printResult(result);
}catch(MATLABException ex){

    // This exception represents errors in MATLAB
    System.out.println(ex);
}catch(IOException ex){

    // This exception represents network issues.
    System.out.println(ex);
}finally{

    client.close();
}
}

private static void printResult(double[][] result){
    for(double[] row : result){
        for(double element : row){
            System.out.print(element + " ");
        }
        System.out.println();
    }
}
}
```

- 13** Compile the Java application, using the `javac` command or use the build capability of your Java IDE.

For example, enter the following:

```
javac -classpath "matlabroot\toolbox\compiler_sdk\mps_client\java\mps_client.jar" MPSClientExample.java
```

- 14** Run the application using the `java` command or your IDE.

For example, enter the following:

```
java -classpath .;"matlabroot\toolbox\compiler_sdk\mps_client\java\mps_client.jar" MPSClientExample
```

The application returns the following at the console:

```
5.0 7.0 9.0
9.0 7.0 5.0
```

See Also

More About

- “Bond Pricing Tool for Java Client” (MATLAB Production Server)

Create a C# Client Using MWHttpClient

This example shows how to write a C# application to call a MATLAB function deployed to MATLAB Production Server. The C# application uses the MATLAB Production Server .NET client library.

A .NET application programmer typically performs this task. The tutorial assumes that you have Microsoft® Visual Studio® and .NET installed on your computer.

Create Microsoft Visual Studio Project

- 1 Open Microsoft Visual Studio.
- 2 Click **File > New > Project**.
- 3 In the New Project dialog box, select the template you want to use. For example, if you want to create a C# console application in Visual Studio 2017, select **Visual C# > Windows Desktop** in the left navigation pane, then select the **Console App (.Net Framework)**.
- 4 Type the name of the project in the **Name** field (for example, `Magic`).
- 5 Click **OK**. Your `Magic` source shell is created, typically named `Program.cs`, by default.

Create Reference to Client Runtime Library

Create a reference in your `Magic` project to the MATLAB Production Server client runtime library. In Microsoft Visual Studio, perform the following steps:

- 1 In the **Solution Explorer** pane within Microsoft Visual Studio (usually on the right side), right-click your `Magic` project, select **Add > Browse**.
- 2 Browse to the MATLAB Production Server .NET client runtime library location.

The library is located in `matlabroot\toolbox\compiler_sdk\mps_client\dotnet`. Select the `MathWorks.MATLAB.ProductionServer.Client.dll` file.

The client library is also available for download at <https://www.mathworks.com/products/matlab-production-server/client-libraries.html>.

- 3 Click **OK**. Your Microsoft Visual Studio project now references the `MathWorks.MATLAB.ProductionServer.Client.dll`.

Design .NET Interface in C#

In this example, you invoke a MATLAB function `mymagic.m` hosted by the server from a .NET client through a .NET interface. The `mymagic` function uses the `magic` function to create a magic square. The function `mymagic` takes a single `int` input and returns a magic square as a 2-D double array.

```
function m = mymagic(in)
    m = magic(in);
```

Design a C# interface `Magic` to match the MATLAB function `mymagic.m`. In your C# client program, use this interface to specify the type of the proxy object reference in the `CreateProxy` method.

- The .NET interface has the same number of inputs and outputs as the MATLAB function.
- Since you are deploying one MATLAB function on the server, you define one corresponding .NET method in your C# code.
- Both the MATLAB function and the .NET interface process the same data types—input type `int` and output type 2-D double.

```
public interface Magic
{
    double[,] mymagic(int in1);
}
```

Write, Build, and Run .NET Application

- 1 Open the Microsoft Visual Studio project Magic that you created earlier.
- 2 In the Program.cs tab, paste in the code below.

```
using System;
using System.Net;
using MathWorks.MATLAB.ProductionServer.Client;

namespace Magic
{
    public class MagicClass
    {
        public interface Magic
        {
            double[,] mymagic(int in1);
        }

        public static void Main(string[] args)
        {
            MWClient client = new MWHttpClient();
            try
            {
                Magic me = client.CreateProxy<Magic>
                    (new Uri("http://localhost:9910/mymagic_deployed"));
                double[,] result1 = me.mymagic(4);
                print(result1);
            }
            catch (MATLABException ex)
            {
                Console.WriteLine("{0} MATLAB exception caught.", ex);
                Console.WriteLine(ex.StackTrace);
            }
            catch (WebException ex)
            {
                Console.WriteLine("{0} Web exception caught.", ex);
                Console.WriteLine(ex.StackTrace);
            }
            finally
            {
                client.Dispose();
            }
            Console.ReadLine();
        }

        public static void print(double[,] x)
        {
            int rank = x.Rank;
            int[] dims = new int[rank];

            for (int i = 0; i < rank; i++)
            {
                dims[i] = x.GetLength(i);
            }

            for (int j = 0; j < dims[0]; j++)
            {
                for (int k = 0; k < dims[1]; k++)
                {
                    Console.Write(x[j, k]);
                    if (k < (dims[1] - 1))
                    {
                        Console.Write(",");
                    }
                }
            }
        }
    }
}
```

```
        }  
        Console.WriteLine();  
    }  
} }  
}
```

The URL value ("http://localhost:9910/mymagic_deployed") used to create the proxy contains three parts.

- the server address (localhost).
- the port number (9910).
- the archive name (mymagic_deployed).

3 Build the application. Click **Build** > **Build Solution**.

4 Run the application. Click **Debug** > **Start Without Debugging**. The program returns the following console output.

```
16,2,3,13  
5,11,10,8  
9,7,6,12  
4,14,15,1
```

See Also

More About

- "Create a .NET MATLAB Production Server Client" (MATLAB Production Server)
- "Configure the Client-Server Connection" (MATLAB Production Server)
- "Synchronous RESTful Requests Using Protocol Buffers in .NET Client" (MATLAB Production Server)

Create a Python Client

This example shows how to write a MATLAB Production Server client using the Python client API. The client application calls the `addmatrix` function you compiled in “Package Deployable Archives with Production Server Compiler App” and deployed in “Share the Deployable Archive” (MATLAB Production Server).

Create a Python MATLAB Production Server client application:

- 1 Copy the contents of the `matlabroot\toolbox\compiler_sdk\mps_clients\python` folder to your development environment.
- 2 Open a command line,
- 3 Change directories into the folder where you copied the MATLAB Production Server Python client.
- 4 Run the following command.

```
python setup.py install
```

- 5 Start the Python command line interpreter.
- 6 Enter the following import statements at the Python command prompt.

```
import matlab
from production_server import client
```

- 7 Open the connection to the MATLAB Production Server instance and initialize the client runtime.

```
client_obj = client.MWHttpClient("http://localhost:9910")
```

- 8 Create the MATLAB data to input to the function.

```
a1 = matlab.double([[1,2,3],[3,2,1]])
a2 = matlab.double([[4,5,6],[6,5,4]])
```

- 9 Call the deployed MATLAB function.

You must know the following:

- Name of the deployed archive
- Name of the function

```
client_obj.addmatrix.addmatrix(a1,a2)
```

```
matlab.double([[5.0,7.0,9.0],[9.0,7.0,5.0]])
```

The syntax for invoking a function is `client.archiveName.functionName(arg1, arg2, ..., [nargout=numOutArgs])`.

- 10 Close the client connection.

```
client_obj.close()
```

Create a C++ Client

This example shows how to write a MATLAB Production Server client using the C client API. The client application calls the `addmatrix` function you compiled in “Package Deployable Archives with Production Server Compiler App” and deployed in “Share the Deployable Archive” (MATLAB Production Server).

Create a C++ MATLAB Production Server client application:

- 1 Create a file called `addmatrix_client.cpp`.
- 2 Using a text editor, open `addmatrix_client.cpp`.
- 3 Add the following include statements to the file:

```
#include <iostream>
#include <mps/client.h>
```

Note The header files for the MATLAB Production Server C client API are located in the `matlabroot/toolbox/compiler_sdk/mps_client/c/include/mps` folder.

- 4 Add the `main()` method to the application.

```
int main ( void )
{
}
```

- 5 Initialize the client runtime.

```
mpsClientRuntime* mpsruntime = mpsInitializeEx(MPS_CLIENT_1_1);
```

- 6 Create the client configuration.

```
mpsClientConfig* config;
mpsStatus status = mpsruntime->createConfig(&config);
```

- 7 Create the client context.

```
mpsClientContext* context;
status = mpsruntime->createContext(&context, config);
```

- 8 Create the MATLAB data to input to the function.

```
double a1[2][3] = {{1,2,3},{3,2,1}};
double a2[2][3] = {{4,5,6},{6,5,4}};

int numIn=2;
mpsArray** inVal = new mpsArray* [numIn];

inVal[0] = mpsCreateDoubleMatrix(2,3,mpsREAL);
inVal[1] = mpsCreateDoubleMatrix(2,3,mpsREAL);

double* data1 = (double *) ( mpsGetData(inVal[0]) );
double* data2 = (double *) ( mpsGetData(inVal[1]) );

for(int i=0; i<2; i++)
{
    for(int j=0; j<3; j++)
    {
        mpsIndex subs[] = { i, j };
        mpsIndex id = mpsCalcSingleSubscript(inVal[0], 2, subs);
        data1[id] = a1[i][j];
        data2[id] = a2[i][j];
    }
}
```

```
    }  
}
```

- 9** Create the MATLAB data to hold the output.

```
int numOut = 1;  
mpsArray **outVal = new mpsArray* [numOut];
```

- 10** Call the deployed MATLAB function.

Specify the following as arguments:

- client context
- URL of the function
- Number of expected outputs
- Pointer to the mpsArray holding the outputs
- Number of inputs
- Pointer to the mpsArray holding the inputs

```
mpsStatus status = mpsruntime->feval(context,  
    "http://localhost:9910/addmatrix/addmatrix",  
    numOut, outVal, numIn, (const mpsArray**)inVal);
```

For more information about the feval function, see the reference material included in the *matlabroot/toolbox/compiler_sdk/mps_client* folder.

- 11** Verify that the function call was successful using an if statement.

```
if (status==MPS_OK)  
{  
}
```

- 12** Inside the if statement, add code to process the output.

```
double* out = mpsGetPr(outVal[0]);  
  
for (int i=0; i<2; i++)  
{  
    for (int j=0; j<3; j++)  
    {  
        mpsIndex subs[] = {i, j};  
        mpsIndex id = mpsCalcSingleSubscript(outVal[0], 2, subs);  
        std::cout << out[id] << "\t";  
    }  
    std::cout << std::endl;  
}
```

- 13** Add an else clause to the if statement to process any errors.

```
else  
{  
    mpsErrorInfo error;  
    mpsruntime->getLastErrorInfo(context, &error);  
    std::cout << "Error: " << error.message << std::endl;  
    switch(error.type)  
    {  
        case MPS_HTTP_ERROR_INFO:  
            std::cout << "HTTP: " << error.details.http.responseCode << ": "  
                << error.details.http.responseMessage << std::endl;  
        case MPS_MATLAB_ERROR_INFO:  
            std::cout << "MATLAB: " << error.details.matlab.identifier
```



```

        << std::endl;
        std::cout << error.details.matlab.message << std::endl;
    case MPS_GENERIC_ERROR_INFO:
        std::cout << "Generic: " << error.details.general.genericErrorMsg
            << std::endl;
    }

    mpsruntime->destroyLastErrorInfo(&error);
}

```

14 Free the memory used by the inputs.

```

for (int i=0; i<numIn; i++)
    mpsDestroyArray(inVal[i]);
delete[] inVal;

```

15 Free the memory used by the outputs.

```

for (int i=0; i<numOut; i++)
    mpsDestroyArray(outVal[i]);
delete[] outVal;

```

16 Free the memory used by the client runtime.

```

mpsruntime->destroyConfig(config);
mpsruntime->destroyContext(context);
mpsTerminate();

```

17 Save the file.

The completed program should resemble the following:

```

#include <iostream>
#include <mps/client.h>

int main ( void )
{
    mpsClientRuntime* mpsruntime = mpsInitializeEx(MPS_CLIENT_1_1);

    mpsClientConfig* config;
    mpsStatus status = mpsruntime->createConfig(&config);

    mpsClientContext* context;
    status = mpsruntime->createContext(&context, config);

    double a1[2][3] = {{1,2,3},{3,2,1}};
    double a2[2][3] = {{4,5,6},{6,5,4}};

    int numIn=2;
    mpsArray** inVal = new mpsArray* [numIn];
    inVal[0] = mpsCreateDoubleMatrix(2,3,mpsREAL);
    inVal[1] = mpsCreateDoubleMatrix(2,3,mpsREAL);
    double* data1 = (double *) ( mpsGetData(inVal[0]) );
    double* data2 = (double *) ( mpsGetData(inVal[1]) );
    for(int i=0; i<2; i++)
    {
        for(int j=0; j<3; j++)
        {
            mpsIndex subs[] = { i, j };
            mpsIndex id = mpsCalcSingleSubscript(inVal[0], 2, subs);
            data1[id] = a1[i][j];
            data2[id] = a2[i][j];
        }
    }

    int numOut = 1;
    mpsArray **outVal = new mpsArray* [numOut];

    status = mpsruntime->feval(context,
        "http://localhost:9910/addmatrix/addmatrix",
        numOut, outVal, numIn, (const mpsArray **)inVal);

    if (status==MPS_OK)
    {
        double* out = mpsGetPr(outVal[0]);
    }
}

```

```

for (int i=0; i<2; i++)
{
    for (int j=0; j<3; j++)
    {
        mpsIndex subs[] = {i, j};
        mpsIndex id = mpsCalcSingleSubscript(outVal[0], 2, subs);
        std::cout << out[id] << "\t";
    }
    std::cout << std::endl;
}
}
else
{
    mpsErrorInfo error;
    mpsruntime->getLastErrorInfo(context, &error);
    std::cout << "Error: " << error.message << std::endl;

    switch(error.type)
    {
    case MPS_HTTP_ERROR_INFO:
        std::cout << "HTTP: "
            << error.details.http.responseCode
            << ": " << error.details.http.responseMessage
            << std::endl;
    case MPS_MATLAB_ERROR_INFO:
        std::cout << "MATLAB: " << error.details.matlab.identifier
            << std::endl;
        std::cout << error.details.matlab.message << std::endl;
    case MPS_GENERIC_ERROR_INFO:
        std::cout << "Generic: "
            << error.details.general.genericErrorMsg
            << std::endl;
    }
    mpsruntime->destroyLastErrorInfo(&error);
}

for (int i=0; i<numIn; i++)
    mpsDestroyArray(inVal[i]);
delete[] inVal;

for (int i=0; i<numOut; i++)
    mpsDestroyArray(outVal[i]);
delete[] outVal;

mpsruntime->destroyConfig(config);
mpsruntime->destroyContext(context);
mpsTerminate();
}

```

18 Compile the application.

To compile your client code, the compiler needs access to `client.h`. This header file is stored in `matlabroot/toolbox/compiler_sdk/mps_client/c/include/mps/`.

To link your application, the linker needs access to the following files stored in `matlabroot/toolbox/compiler_sdk/mps_client/c/`:

Files Required for Linking

Windows	UNIX®/Linux	Mac OS X
<code>\$arch\lib \mpsclient.lib</code>	<code>\$arch/lib/ libprotobuf.so</code>	<code>\$arch/lib/ libprotobuf.dylib</code>
	<code>\$arch/lib/libcurl.so</code>	<code>\$arch/lib/ libcurl.dylib</code>
	<code>\$arch/lib/ libmwmpsclient.so</code>	<code>\$arch/lib/ libmwmpsclient.dylib</code>
	<code>\$arch/lib/ libmwcpp11compat.so</code>	

19 Run the application.

To run your application, add the following files stored in *matlabroot/toolbox/compiler_sdk/mps_client/c/* to the application's path:

Files Required for Running

Windows	UNIX/Linux	Mac OS X
\$arch\lib \mpsclient.dll	\$arch/lib/ libprotobuf.so	\$arch/lib/ libprotobuf.dylib
\$arch\lib \libprotobuf.dll	\$arch/lib/libcurl.so	\$arch/lib/ libcurl.dylib
\$arch\lib\libcurl.dll	\$arch/lib/ libmwmpsclient.so	\$arch/lib/ libmwmpsclient.dylib
	\$arch/lib/ libmwcpp11compat.so	

The client invokes `addmatrix` function on the server instance and returns the following matrix at the console:

```
5.0 7.0 9.0
9.0 7.0 5.0
```


RESTful API JSON Encode and Decode Functions

mps.json.encode

Convert MATLAB data to JSON text using MATLAB Production Server JSON schema

Syntax

```
text = mps.json.encode(data)
text = mps.json.encode(data,Name,Value)
```

Description

`text = mps.json.encode(data)` encodes MATLAB data and returns JSON text in JSON schema for MATLAB Production Server. You can use this JSON text on multiple platforms to encode content for MATLAB Production Server.

`text = mps.json.encode(data,Name,Value)` specifies additional options with one or more name-value pair arguments for specific input cases. For example, you can decide to encode `data` in the large or small format defined for representing data types.

Examples

Convert a Matrix to JSON Schema for MATLAB Production Server

Encode a 3-by-3 magic square in the JSON format.

```
mps.json.encode(magic(3))
ans =
    '[[8,1,6],[3,5,7],[4,9,2]]'
```

Convert a Matrix and Specify Format for JSON Schema for MATLAB Production Server

Encode a 3-by-3 magic square in JSON using the `large` format option.

```
mps.json.encode(magic(3),'Format','large')
ans =
    '{"mwdata":[8,3,4,1,5,9,6,7,2],"mwsizе":[3,3],"mwtype":"double"}'
```

Convert an Array Containing NaN, Inf, or -Inf to JSON Schema for MATLAB Production Server

Encode an array containing `-Inf`, `NaN`, and `Inf` in JSON using `'object'` in `'NaNInfType'` option.

```
mps.json.encode([-Inf NaN Inf],'NaNInfType','object','Format','large')
```


Introduced in R2018a

mps.json.decode

Convert a character vector or string in MATLAB Production Server JSON schema to MATLAB data

Syntax

```
data = mps.json.decode(text)
```

Description

`data = mps.json.decode(text)` parses JSON schema for MATLAB Production Server to convert it to MATLAB data.

Examples

Decode JSON-Formatted Text for a Matrix

```
mps.json.decode(' [[8,1,6],[3,5,7],[4,9,2]]')
```

```
ans =
     8     1     6
     3     5     7
     4     9     2
```

Decode a Matrix in JSON That Uses Large Format

```
mps.json.decode(' {"mwdata": [1,4,3,2], "mwsiz": [2,2], "mwtype": "double"}')
```

```
ans =
     1     3
     4     2
```

Input Arguments

text — JSON text following the schema for MATLAB Production Server

character vector (default) | string

JSON following the schema for MATLAB Production Server, specified as a character vector or string.

`text` can be in various formats like `small`, `large`, `NaNInfType`, and `PrettyPrint`, as explained in “Name-Value Pair Arguments” on page 8-3 on the `mps.json.encode` page.

Output Arguments

data — MATLAB data

any MATLAB data type

MATLAB data decoded from MATLAB Production Server JSON text returned as the data-type encoded in `text`.

See Also

`mps.json.decoderesponse` | `mps.json.encode` | `mps.json.encoderrequest`

Introduced in R2018a

mps.json.encodedrequest

Convert MATLAB data in a server request to JSON text using MATLAB Production Server JSON schema

Syntax

```
text = mps.json.encodedrequest(rhs)
text = mps.json.encodedrequest(rhs,Name,Value)
```

Description

`text = mps.json.encodedrequest(rhs)` encodes the request that is input to the deployed MATLAB function using JSON schema for MATLAB Production Server. It builds a server request that includes MATLAB variables and options, such as 'Nargout' and 'OutputFormat', that are needed to make a call to MATLAB Production Server.

`text = mps.json.encodedrequest(rhs,Name,Value)` specifies additional options with one or more name-value pair arguments for specific input cases.

Examples

Write MATLAB Production Server Payload

```
mps.json.encodedrequest([1 2 3 4])
ans =
    '{"rhs":[[[1,2,3,4]]],"nargout":1,"outputFormat":{"mode":"small","nanType":"string"}}'
```

Write MATLAB Production Server Payload, and Set Output Parameters

Let `rhs = {'Red'}, [15], [1 3; 5 7], {'Green'}`.

```
mps.json.encodedrequest(rhs, 'Nargout', 3, 'OutputFormat', 'large')
ans =
    '{"rhs":["Red",15,[[1,3],[5,7]],"Green"],"nargout":3,"outputFormat":{"mode":"large","nanType":"string"}}'
```

Write a MATLAB Function as MATLAB Production Server Payload

Use the MATLAB function `horzcat` that horizontally concatenates two matrices.

```
a = [1 2; 5 6];
b = [3 4; 7 8];
mps.json.encodedrequest({horzcat(a,b)})
ans =
    '{"rhs":[[[1,2,3,4],[5,6,7,8]]],"nargout":1,"outputFormat":{"mode":"small","nanType":"string"}}'
```

Read Response from a `sortstudent` Function Deployed on MATLAB Production Server

Execute `mps.json.encoderrequest` and `mps.json.decoderresponse` to call a function deployed on MATLAB Production Server using `webwrite`. In this case, student names and their corresponding scores are deployed to MATLAB Production Server to the `sortstudents` function that sorts students based on their scores. The result returned is the equivalent to calling the function `sortstudents(struct('name', 'Ed', 'score', 83), struct('name', 'Toni', 'score', 91))` from MATLAB.

```
data = {struct('name', 'Ed', 'score', 83), struct('name', 'Toni', 'score', 91)};
body = mps.json.encoderrequest(data);

options = weboptions;

% Create a weboptions object that instructs webread to return JSON text
options.ContentType = 'text';

% Create a weboptions object that instructs webwrite to encode character vector data as JSON to post it to a web service
options.MediaType = 'application/json';

response = webwrite('http://localhost:9910/studentapp/sortstudents', body, options);
result = mps.json.decoderresponse(response);
```

Input Arguments

rhs — Input arguments for deployed MATLAB function that is called

cell vector of any MATLAB data type supported by MATLAB Production Server

Input arguments for a MATLAB function deployed on MATLAB Production Server that is called, specified as a cell vector.

Name-Value Pair Arguments

Specify optional comma-separated pairs of `Name`, `Value` arguments. `Name` is the argument name and `Value` is the corresponding value. `Name` must appear inside quotes. You can specify several name and value pair arguments in any order as `Name1, Value1, ..., NameN, ValueN`.

Example: `mps.json.encoderrequest(rhs, 'Format', 'large')`

Nargout — Number of output arguments for function deployed on MATLAB Production Server

1 (default) | any positive integer

Number of output arguments for function deployed on MATLAB Production Server, specified as comma-separated pair consisting of 'Nargout' and number of output arguments.

`mps.json.encoderrequest(rhs, 'Nargout', 3)`.

Format — Format to encode rhs

'small' (default) | 'large'

Format to encode `rhs`, specified as comma-separated pair consisting of 'Format' and the format 'small' or 'large'.

The `small` format is a simpler representation of MATLAB data types in JSON, whereas the `large` format is a more generic representation. For more information, see “JSON Representation of MATLAB Data Types”.

NaNInfType — Format to encode NaN, Inf, -Inf in rhs

'string' (default) | 'object'

Format to encode NaN, Inf, -Inf in rhs, specified as comma-separated pair consisting of 'NaNInfType' and JSON data types 'string' and 'object'.

OutputFormat — Format for response from MATLAB function deployed on MATLAB Production Server

'small' (default) | 'large'

Format for response from MATLAB function deployed on MATLAB Production Server, specified as comma-separated pair consisting of 'OutputFormat' and the format 'small' or 'large'.

Output format is set using `mps.json.encoderequest(rhs, 'OutputFormat', 'large')`.

OutputNaNInfType — Type for response from MATLAB function deployed on MATLAB Production Server containing NaN, Inf, -Inf

'string' (default) | 'object'

Type for response from MATLAB function deployed on MATLAB Production Server containing NaN, Inf, -Inf, specified as comma-separated pair consisting of 'OutputNaNInfType' and JSON data type 'string' and 'object'.

NaN-type for output response is set using `mps.json.encoderequest(rhs, 'OutputNaNInfType', 'object')`.

PrettyPrint — Format text for readability

false (default) | true

Format text for readability, specified as a comma-separated pair consisting of 'PrettyPrint' and logical 'true' or 'false'. Syntax is `mps.json.encoderequest(rhs, 'PrettyPrint', true)`.

Output Arguments**text — JSON text**

character vector

JSON-formatted text for JSON schema for MATLAB Production Server, returned as a character vector.

See Also

`mps.json.decode` | `mps.json.decoderesponse` | `mps.json.encode`

Introduced in R2018a

mps.json.decoderesponse

Convert JSON text from a server response to MATLAB data

Syntax

```
lhs = mps.json.decoderesponse(response)
error = mps.json.decoderesponse(response)
```

Description

`lhs = mps.json.decoderesponse(response)` reads the JSON payload of the output arguments returned from a successful MATLAB function call.

`error = mps.json.decoderesponse(response)` reads the JSON payload of the MATLAB error thrown from a failed MATLAB function call.

Examples

Read from MATLAB Production Server Payload

```
mps.json.decoderesponse('{"lhs":[[[1, 2, 3, 4]]}')
```

```
ans =
    1x1 cell array
    {1x4 double}
```

Read response from a sortstudent function deployed on MATLAB Production Server

Execute `mps.json.encoderesponse` and `mps.json.decoderesponse` to call a function deployed on MATLAB Production Server using `webwrite`. In this case, student names and their corresponding scores are deployed to MATLAB Production Server to the `sortstudents` function that sorts students based on their scores. The result returned is the equivalent to calling the function `sortstudents(struct('name', 'Ed', 'score', 83), struct('name', 'Toni', 'score', 91))` from MATLAB.

```
data = {struct('name', 'Ed', 'score', 83), struct('name', 'Toni', 'score', 91)};
body = mps.json.encoderesponse(data);

options = weboptions;

% Create a weboptions object that instructs webread to return JSON text
options.ContentType = 'text';

% Create a weboptions object that instructs webwrite to encode character vector data as JSON to post it to a web service
options.MediaType = 'application/json';

response = webwrite('http://localhost:9910/studentapp/sortstudents', body, options);
result = mps.json.decoderesponse(response);
```

Input Arguments

response — JSON result from a MATLAB function call

char (default)

JSON result from a MATLAB function call specified as JSON text.

Output Arguments

lhs — Cell vector of output arguments

Cell vector

Cell vector of output arguments that are from a MATLAB function called from MATLAB Production Server.

error — Generated output when request results in a MATLAB error

struct array

Generated output when request to MATLAB function called from MATLAB Production Server results in a MATLAB error returned as a struct array.

See Also

`mps.json.decode` | `mps.json.encode` | `mps.json.encoderesponse`

Introduced in R2018a

Persistence Functions

mps.cache.Controller

Manage the life cycle of a persistence service in a MATLAB testing environment

Description

`mps.cache.Controller` is used to manage the life cycle of a persistence service in a MATLAB testing environment. You can perform various actions such as starting and stopping the service using the object.

Creation

Create a `mps.cache.Controller` object using `mps.cache.control`.

Properties

ActiveConnection — Connection indicator

True | False

This property is read-only.

Indicates whether the connection to the persistence provider is active or not. The value is `True` when the persistence service is attached to the MATLAB session, otherwise it is `False`.

Example: `ActiveConnection: False`

ManageService — Service management indicator

True | False | Unknown

This property is read-only.

Indicates whether the controller object is managing the persistence service or not. `ManageService` is `True` if the persistence service is started using the controller's `start` method and `False` if the MATLAB session is attached to the persistence service using the controller's `attach` method. In all other cases, the value is set to `Unknown`.

If `ManageService` is `True`, destroying the controller object via `delete` or exiting MATLAB will stop the persistence service.

Example: `ManageService: True`

Host — Host name

character vector

This property is read-only.

Name of the system hosting the persistence service.

This property is not displayed when you create a controller that uses MATLAB as a persistence provider.

Example: Host: 'localhost'

Port — Port number

positive scalar

This property is read-only.

Port number for persistence service.

This property is not displayed when you create a controller that uses MATLAB as a persistence provider.

Example: Port: 4519

ProviderName — Name of persistence provider

'Redis' | 'MatlabTest'

This property is read-only.

Name of the persistence provider.

Currently, Redis™ is the only supported persistence provider.

You can also use MATLAB as a persistence provider for testing purposes. If you use MATLAB as a persistence provider, the provider name is displayed as 'MatlabTest'.

Example: ProviderName: 'Redis'

Example: ProviderName: 'MatlabTest'

ConnectionName — Name of connection

character vector | string

This property is read-only.

Name of connection to persistence service.

Example: ConnectionName: 'myRedisConnection'

Folder* — Storage folder path

character vector

This property is read-only.

Storage folder path. The folder displayed is used as a database.

* This property is displayed only when you create a controller that uses MATLAB as a persistence provider.

Example: Folder: 'c:\tmp'

Object Functions

mps.cache.control	Create a persistence service controller object
start	Start a persistence service and attach it a to MATLAB session
stop	Stop a persistence service and detach it from a MATLAB session
restart	Restart a persistence service and attach it to a MATLAB session

attach	Connect a MATLAB session to a persistence service that is already running
detach	Disconnect MATLAB session from a persistence service that is already running
ping	Test whether the persistence service is reachable
version	Version number for persistence provider

Examples

Create a Redis Service Controller

```
ctrl = mps.cache.control('myRedisConnection', 'Redis', 'Port', 4519)
```

```
ctrl =
```

```
Controller with properties:
```

```
ActiveConnection: False
ManageService: Unknown
Host: 'localhost'
Port: 4519
Operations: "read | write | create | update"
ProviderName: 'Redis'
ConnectionName: 'myRedisConnection'
```

Create a MATLAB Service Controller

```
mctrl = mps.cache.control('myMATFileConnection', 'MatlabTest', 'Folder', 'c:\tmp')
```

```
mctrl =
```

```
Controller with properties:
```

```
ActiveConnection: False
ManageService: Unknown
Folder: 'c:\tmp'
Operations: "read | write | create | update"
ProviderName: 'MatlabTest'
ConnectionName: 'myMATFileConnection'
```

See Also

`mps.cache.DataCache`

Topics

“Use a Data Cache to Persist Data” (MATLAB Production Server)

Introduced in R2018b

mps.cache.DataCache

Represent cache concept in MATLAB code

Description

`mps.cache.DataCache` represents the concept of cache in MATLAB code. It is an abstract class that serves as a superclass for each persistence provider-specific data cache class.

Currently, Redis and MATLAB are the only supported persistence providers. Therefore, the cache objects will be of type `mps.cache.RedisCache` or `mps.cache.MATFileCache`.

Creation

Create a persistence provider-specific subclass of `mps.cache.DataCache` using `mps.cache.connect`.

Properties

See provider-specific subclasses for properties.

Object Functions

<code>mps.cache.connect</code>	Connect to cache, or create a cache if it doesn't exist
<code>bytes</code>	Return the number of bytes of storage used by value stored at each key
<code>clear</code>	Remove all keys and values from cache
<code>flush</code>	Write all locally modified keys to the persistence service
<code>get</code>	Fetch values of keys from cache
<code>getp</code>	Get the value of a public cache property
<code>isKey</code>	Determine if the cache contains specified keys
<code>keys</code>	Get all keys from cache
<code>length</code>	Number of key-value pairs in the data cache
<code>purge</code>	Flush all local data to the persistence service
<code>put</code>	Write key-value pairs to cache
<code>remove</code>	Remove keys from cache
<code>retain</code>	Store remote keys from cache locally or return locally stored keys

Examples

Connect to a Redis Cache

Start a persistence service that uses Redis as the persistence provider. The service requires a connection name and an open port. Once the service is running, you can connect to the service using the connection name and create a cache.

```
ctrl = mps.cache.control('myRedisConnection', 'Redis', 'Port', 4519);
start(ctrl)
c = mps.cache.connect('myCache', 'Connection', 'myRedisConnection')
```

```
c =
```

```
RedisCache with properties:
```

```
    Host: 'localhost'  
    Port: 4519  
    Name: 'myCache'  
Operations: "read | write | create | update"  
    LocalKeys: {}  
    Connection: 'myRedisConnection'
```

Use `getp` instead of dot notation to access properties.

See Also

`mps.cache.Controller`

Topics

“Use a Data Cache to Persist Data” (MATLAB Production Server)

Introduced in R2018b

mps.sync.TimedMATFileMutex

Represent a MAT-file persistence service mutex

Description

`mps.sync.TimedMATFileMutex` is synchronization primitive used to protect data in a MAT-file database from being simultaneously accessed by multiple workers.

Creation

Create a `mps.sync.TimedMATFileMutex` object using `mps.sync.mutex`.

Properties

Expiration — Duration of lock in seconds

positive integer

This property is read-only.

Duration of advisory lock in seconds.

Example: 10

ConnectionName — Name of connection

character vector

This property is read-only.

Name of connection to persistence service.

Example: 'myRedisConnection'

MutexName — Name of lock

character vector

This property is read-only.

Name of advisory lock, specified as a character vector.

Example: 'myMutex'

Object Functions

<code>mps.sync.mutex</code>	Create a persistence service mutex
<code>acquire</code>	Acquire advisory lock on persistence service mutex
<code>own</code>	Check ownership of advisory lock on a persistence service mutex object
<code>release</code>	Release advisory lock on persistence service mutex

Examples

Create a MAT-File Lock Object

```
mctrl = mps.cache.control('myMATFileConnection','MatlabTest','Folder','c:\tmp')
start(mctrl)
lk = mps.sync.mutex('myMATFileMutex','Connection','myMATFileConnection')
```

```
lk =
```

```
TimedMATFileMutex with properties:
```

```
Expiration: 10
ConnectionName: 'myMATFileConnection'
MutexName: 'myMATFileMutex'
```

See Also

`acquire` | `mps.sync.TimedRedisMutex` | `mps.sync.mutex` | `own` | `release`

Topics

“Use a Data Cache to Persist Data” (MATLAB Production Server)

Introduced in R2018b

mps.sync.TimedRedisMutex

Represent a Redis persistence service mutex

Description

`mps.sync.TimedRedisMutex` is a synchronization primitive used to protect data in a Redis persistence service from being simultaneously accessed by multiple workers.

Creation

Create a `mps.sync.TimedRedisMutex` object using `mps.sync.mutex`.

Properties

Expiration — Duration of lock in seconds

positive integer

This property is read-only.

Duration of advisory lock in seconds.

Example: 10

ConnectionName — Name of connection

character vector

This property is read-only.

Name of connection to persistence service.

Example: 'myRedisConnection'

MutexName — Name of mutex

character vector

This property is read-only.

Name of mutex, returned as a character vector.

Example: 'myMutex'

Object Functions

<code>mps.sync.mutex</code>	Create a persistence service mutex
<code>acquire</code>	Acquire advisory lock on persistence service mutex
<code>own</code>	Check ownership of advisory lock on a persistence service mutex object
<code>release</code>	Release advisory lock on persistence service mutex

Examples

Create a Redis Lock Object

```
ctrl = mps.cache.control('myRedisConnection','Redis','Port',4519);  
start(ctrl)  
lk = mps.sync.mutex('myMutex','Connection','myRedisConnection')  
  
lk =
```

TimedRedisMutex with properties:

```
Expiration: 10  
ConnectionName: 'myRedisConnection'  
MutexName: 'myMutex'
```

See Also

[acquire](#) | [mps.sync.TimedMATFileMutex](#) | [mps.sync.mutex](#) | [own](#) | [release](#)

Topics

“Use a Data Cache to Persist Data” (MATLAB Production Server)

Introduced in R2018b

acquire

Acquire advisory lock on persistence service mutex

Syntax

```
TF = acquire(lk,timeout)
```

Description

`TF = acquire(lk,timeout)` acquires an advisory lock and returns a logical 1 (`true`) if the lock was successful, and a logical 0 (`false`) otherwise. If the lock is unavailable, `acquire` will continue trying to acquire it for `timeout` seconds.

Examples

Apply Advisory Lock

First, create a persistence service controller object and use that object to start the persistence service.

```
ctrl = mps.cache.control('myRedisConnection','Redis','Port',4519);
start(ctrl)
```

Use the connection name to create a persistence service mutex.

```
lk = mps.sync.lock('myDbLock','Connection','myRedisConnection')
```

Try to acquire advisory lock. If lock is unavailable, retry acquiring for 20 seconds.

```
acquire(lk, 20);
```

```
TF =
```

```
    logical
```

```
    1
```

Input Arguments

lk — Mutex object

persistence service mutex object

A persistence service specific mutex object. If you use Redis as your persistence provider, `lk` will be a `mps.sync.TimedRedisMutex` object. If you use a MATLAB as your persistence provider, `lk` will be a `mps.sync.TimedMATFileMutex` object.

timeout — Retry duration

positive integer

Duration after which to retry acquiring lock.

Example: 20

Output Arguments

TF — Logical value

logical array

TF has a logical 1 (`true`) if acquiring the advisory lock was successful, and a logical 0 (`false`) otherwise.

See Also

`mps.sync.TimedMATFileMutex` | `mps.sync.TimedRedisMutex` | `mps.sync.mutex` | `own` | `release`

Topics

“Use a Data Cache to Persist Data” (MATLAB Production Server)

Introduced in R2018b

attach

Connect a MATLAB session to a persistence service that is already running

Syntax

```
attach(ctrl)
```

Description

`attach(ctrl)` connects a MATLAB session to a persistence service that is already running.

Examples

Connect a MATLAB Session to a Persistence Service

Attach MATLAB code to a persistence service.

Start a persistence service outside your MATLAB session from system command line using or using the dashboard. Assuming you started the service using a connection name `myOutsideRedisConnection` at port `8899`, attach your MATLAB session to it from the MATLAB desktop.

```
ctrl = mps.cache.control('myOutsideRedisConnection','Redis','Port',8899);  
attach(ctrl)
```

Input Arguments

`ctrl` — Service controller

`mps.cache.Controller` object

Persistence service controller, represented as a `mps.cache.Controller` object.

Example: `attach(ctrl)`

See Also

`detach` | `restart` | `start` | `stop`

Topics

“Use a Data Cache to Persist Data” (MATLAB Production Server)

Introduced in R2018b

bytes

Return the number of bytes of storage used by value stored at each key

Syntax

```
b = bytes(c,keys)
```

Description

`b = bytes(c,keys)` returns the number of bytes of storage used by value stored at each key.

Examples

Get the Number of Bytes of Storage Used by a Value in the Cache

Start a persistence service that uses Redis as the persistence provider. The service requires a connection name and an open port. Once the service is running, you can connect to the service using the connection name and create a cache.

```
ctrl = mps.cache.control('myRedisConnection','Redis','Port',4519);
start(ctrl)
c = mps.cache.connect('myCache','Connection','myRedisConnection');
```

Add keys and values to the cache and then get the number of bytes of storage used by a value stored at each key in the cache. Represent the keys and the bytes used by each value of key as a MATLAB table.

```
put(c,'keyOne',10,'keyTwo',20,'keyThree',30,'keyFour',[400 500],'keyFive',magic(5))
b = bytes(c,{'keyOne','keyTwo','keyThree','keyFour','keyFive'})
tt = table(keys(c), bytes(c,keys(c)),'VariableNames',{'Keys','Bytes'})
```

b =

```
    72    72    72    80   264
```

tt =

5×2 table

Keys	Bytes
'keyFive'	264
'keyFour'	80
'keyOne'	72
'keyThree'	72
'keyTwo'	72

Input Arguments

c — Data cache

persistence provider specific data cache object

A data cache represented by a persistence provider specific data cache object.

Currently, Redis and MATLAB are the only supported persistence providers. Therefore, the cache objects will be of type `mps.cache.RedisCache` or `mps.cache.MATFileCache`.

Example: `c`

keys — Keys

cell array of character vectors

A list of all the keys, specified as a cell array of character vectors.

Example: `{'keyOne', 'keyTwo', 'keyThree', 'keyFour', 'keyFive'}`

Output Arguments

b — Number of bytes

numeric row vector

Number of bytes used by each value associated with a key, returned as a numeric row vector.

The byte counts in the output vector appear in the same order as the corresponding input keys. `b(i)` is the byte count for keys(`i`).

See Also

`get` | `keys` | `length` | `put`

Topics

“Use a Data Cache to Persist Data” (MATLAB Production Server)

Introduced in R2018b

clear

Remove all keys and values from cache

Syntax

```
n = clear(c)
```

Description

`n = clear(c)` removes all keys and values from cache and returns the number of keys cleared from the cache in `n`.

`clear` removes both local and remote keys and values.

Examples

Clear All Keys and Values from Cache

Start a persistence service that uses Redis as the persistence provider. The service requires a connection name and an open port. Once the service is running, you can connect to the service using the connection name and create a cache.

```
ctrl = mps.cache.control('myRedisConnection','Redis','Port',4519);
start(ctrl)
c = mps.cache.connect('myCache','Connection','myRedisConnection');
```

Add keys and values to the cache and display them as a MATLAB table.

```
put(c,'keyOne',10,'keyTwo',20,'keyThree',30,'keyFour',[400 500],'keyFive',magic(5))
tt = table(keys(c), get(c,keys(c)),'VariableNames',{'Keys','Values'})
```

```
tt =
```

```
5×2 table
```

Keys	Values
'keyFive'	[5×5 double]
'keyFour'	[1×2 double]
'keyOne'	[10]
'keyThree'	[30]
'keyTwo'	[20]

Clear the cache and check if it is empty.

```
n = clear(c)
k = keys(c)
```

```
n =
```

```
int64
```

5

k =

0×1 empty cell array

Input Arguments

c — Data cache

persistence provider specific data cache object

A data cache represented by a persistence provider specific data cache object.

Currently, Redis and MATLAB are the only supported persistence providers. Therefore, the cache objects will be of type `mps.cache.RedisCache` or `mps.cache.MATFileCache`.

Example: c

Output Arguments

n — Number of key-value pairs

integer

Number of key-value pairs removed, returned as an integer.

Example: 5

See Also

`flush` | `keys` | `purge` | `put` | `remove` | `retain`

Topics

“Use a Data Cache to Persist Data” (MATLAB Production Server)

Introduced in R2018b

detach

Disconnect MATLAB session from a persistence service that is already running

Syntax

```
detach(ctrl)
```

Description

`detach(ctrl)` disconnects MATLAB session from a persistence service that is already running.

Examples

Disconnect MATLAB Code

Disconnect MATLAB code from a persistence service.

First, create a persistence service controller object and use that object to start the persistence service. Once you have a persistence service running, you can connect MATLAB code to it. You can then disconnect the code from the service.

```
ctrl = mps.cache.control('myRedisConnection','Redis','Port',4519);  
start(ctrl)  
attach(ctrl)  
detach(ctrl)
```

Input Arguments

ctrl — Service controller

`mps.cache.Controller` object

Persistence service controller, represented as a `mps.cache.Controller` object.

Example: `detach(ctrl)`

See Also

`attach` | `restart` | `start` | `stop`

Topics

“Use a Data Cache to Persist Data” (MATLAB Production Server)

Introduced in R2018b

flush

Write all locally modified keys to the persistence service

Syntax

```
modKeys = flush(c)
```

Description

`modKeys = flush(c)` writes all locally modified data in `c` to the persistence service and returns a list of keys that have been modified.

`flush` does not clear the list of retained keys.

Examples

Write All Locally Modified Data to the Persistence Service

Start a persistence service that uses Redis as the persistence provider. The service requires a connection name and an open port. Once the service is running, you can connect to the service using the connection name and create a cache.

```
ctrl = mps.cache.control('myRedisConnection', 'Redis', 'Port', 4519);
start(ctrl)
c = mps.cache.connect('myCache', 'Connection', 'myRedisConnection');
```

Add keys and values to the cache and display them as a MATLAB table.

```
put(c, 'keyOne', 10, 'keyTwo', 20, 'keyThree', 30, 'keyFour', [400 500], 'keyFive', magic(5))
tt = table(keys(c), get(c, keys(c)), 'VariableNames', {'Keys', 'Values'})
```

```
tt =
```

```
5×2 table
```

Keys	Values
'keyFive'	[5×5 double]
'keyFour'	[1×2 double]
'keyOne'	[10]
'keyThree'	[30]
'keyTwo'	[20]

Retain a single key locally and verify that it shows up as a local key in the cache object.

```
retain(c, 'keyOne')
display(c)
```

```
c =
```

RedisCache with properties:

```

        Host: 'localhost'
        Port: 4519
        Name: 'myCache'
Operations: "read | write | create | update"
  LocalKeys: {'keyOne'}
Connection: 'myRedisConnection'

```

Use `getp` instead of dot notation to access properties.

Modify the local key and flush it to the remote cache. Display the keys and values in the cache as a MATLAB table.

```

put(c, 'keyOne', rand(3))
modKeys = flush(c)
tt = table(keys(c), get(c,keys(c))', 'VariableNames', {'Keys', 'Values'})

```

modKeys =

1×1 cell array

```
{'keyOne'}
```

tt =

5×2 table

Keys	Values
'keyFive'	[5×5 double]
'keyFour'	[1×2 double]
'keyOne'	[3×3 double]
'keyThree'	[30]
'keyTwo'	[20]

Input Arguments

c — Data cache

persistence provider specific data cache object

A data cache represented by a persistence provider specific data cache object.

Currently, Redis and MATLAB are the only supported persistence providers. Therefore, the cache objects will be of type `mps.cache.RedisCache` or `mps.cache.MATFileCache`.

Example: c

Output Arguments

modKeys — Modified keys

cell array of character vectors

A list of the modified keys that were written to the persistence service, returned as a cell array of character vectors.

See Also

clear | keys | purge | remove | retain

Topics

“Use a Data Cache to Persist Data” (MATLAB Production Server)

Introduced in R2018b

get

Fetch values of keys from cache

Syntax

```
values = get(c,keys)
```

Description

`values = get(c,keys)` fetches values of keys specified by `keys` from the cache specified by `c`. Values are returned in the same order as input variables as a cell array.

Examples

Get Values for Keys from Cache

Start a persistence service that uses Redis as the persistence provider. The service requires a connection name and an open port. Once the service is running, you can connect to the service using the connection name and create a cache.

```
ctrl = mps.cache.control('myRedisConnection','Redis','Port',4519);
start(ctrl)
c = mps.cache.connect('myCache', 'Connection', 'myRedisConnection');
```

Add keys and values to the cache.

```
put(c,'keyOne',10,'keyTwo',20,'keyThree',30,'keyFour',[400 500],'keyFive',magic(5))
```

Get all the keys and associated values and display them as a MATLAB table.

```
k = keys(c)
v = get(c,{'keyOne','keyTwo','keyThree','keyFour','keyFive'})
tt = table(keys(c), get(c,keys(c)),'VariableNames',{'Keys','Values'})
```

k =

5×1 cell array

```
{'keyFive' }
{'keyFour' }
{'keyOne'  }
{'keyThree'}
{'keyTwo'  }
```

v =

1×5 cell array

```
{[10]}    {[20]}    {[30]}    {1×2 double}    {5×5 double}
```

tt =

5×2 table

Keys	Values
'keyFive'	[5×5 double]
'keyFour'	[1×2 double]
'keyOne'	[10]
'keyThree'	[30]
'keyTwo'	[20]

Input Arguments

c — Data cache

persistence provider specific data cache object

A data cache represented by a persistence provider specific data cache object.

Currently, Redis and MATLAB are the only supported persistence providers. Therefore, the cache objects will be of type `mps.cache.RedisCache` or `mps.cache.MATFileCache`.

Example: `c`

keys — Keys

cell array of character vectors

A cell array of keys whose values you want to retrieve from cache.

Example: `{'keyOne', 'keyTwo', 'keyThree', 'keyFour', 'keyFive'}`

Output Arguments

values — Values

cell array

A list of values associated with keys, returned as a cell array.

See Also

`getp` | `keys` | `length` | `put`

Topics

“Use a Data Cache to Persist Data” (MATLAB Production Server)

Introduced in R2018b

getp

Get the value of a public cache property

Syntax

```
value = getp(c,property)
```

Description

`value = getp(c,property)` gets the value of a public cache property.

Ordinarily, you would be able to access the public properties of a cache object using the dot notation. For example: `c.Connection`. However, all cache objects use dot reference and dot assignment to refer to keys stored in the cache rather than cache object properties. Therefore, `c.Connection` refers to a key named `Connection` in the cache instead of the cache's `Connection` property.

There is no `setp` method since all cache properties are read-only.

Examples

Get the Value of a Named, Public, Hidden Property

Start a persistence service that uses Redis as the persistence provider. The service requires a connection name and an open port. Once the service is running, you can connect to the service using the connection name and create a cache.

```
ctrl = mps.cache.control('myRedisConnection', 'Redis', 'Port', 4519);
start(ctrl)
c = mps.cache.connect('myCache', 'Connection', 'myRedisConnection');
```

Retrieve the connection name.

```
getp(c, 'Connection')
```

```
ans =
```

```
    'myRedisConnection'
```

Input Arguments

c — Data cache

persistence provider specific data cache object

A data cache represented by a persistence provider specific data cache object.

Currently, Redis and MATLAB are the only supported persistence providers. Therefore, the cache objects will be of type `mps.cache.RedisCache` or `mps.cache.MATFileCache`.

Example: `c`

property — Property name

character vector

Property name, specified as a character vector. The common public cache properties are `Name`, `LocalKeys`, and `Connection`. Provider-specific cache objects may have additional properties. For example, `mps.cache.RedisCache` has the properties `Host` and `Port`.

Example: `'Connection'`

Output Arguments**value — Property value**

valid value

A valid property value.

See Also

`get` | `keys` | `put`

Topics

"Use a Data Cache to Persist Data" (MATLAB Production Server)

Introduced in R2018b

isKey

Determine if the cache contains specified keys

Syntax

```
TF = isKey(c,keys)
```

Description

`TF = isKey(c,keys)` returns a logical 1 (`true`) if `c` contains the specified key, and returns a logical 0 (`false`) otherwise.

If `keys` is an array that specifies multiple keys, then `TF` is a logical array of the same size, and `TF{i}` is `true` if `keys{i}` exists in cache `c`.

Examples

Determine if the Cache Contains Specified Keys

Start a persistence service that uses Redis as the persistence provider. The service requires a connection name and an open port. Once the service is running, you can connect to the service using the connection name and create a cache.

```
ctrl = mps.cache.control('myRedisConnection','Redis','Port',4519);
start(ctrl)
c = mps.cache.connect('myCache','Connection','myRedisConnection');
```

Add keys and values to the cache.

```
put(c,'keyOne',10,'keyTwo',20,'keyThree',30,'keyFour',[400 500],'keyFive',magic(5))
```

Determine if the cache contains specified keys.

```
TF = isKey(c,{'keyOne','keyTW00','keyTREE','key4','keyFive'})
```

```
TF =
```

```
1×5 logical array
```

```
1 0 0 0 1
```

Input Arguments

c — Data cache

persistence provider specific data cache object

A data cache represented by a persistence provider specific data cache object.

Currently, Redis and MATLAB are the only supported persistence providers. Therefore, the cache objects will be of type `mps.cache.RedisCache` or `mps.cache.MATFileCache`.

Example: `c`

keys — Keys to search for

character vector | string | cell array of character vectors or strings

Keys to search for in the cache object `c`, specified as a character vector, string, or cell array of character vectors or strings. To search for multiple keys, specify `keys` as a cell array.

Example: `{ 'keyOne' , 'keyTW00' , 'keyTREE' , 'key4' , 'keyFive' }`

Output Arguments**TF — Logical value**

logical array

A logical array of the same size as `keys` indicating which specified keys were found in the data cache. `TF` has a logical `1` (`true`) if `c` contains a key specified by `keys`, and a logical `0` (`false`) otherwise.

See Also

`get` | `keys` | `length` | `put`

Topics

“Use a Data Cache to Persist Data” (MATLAB Production Server)

Introduced in R2018b

keys

Get all keys from cache

Syntax

```
k = keys(c)
```

Description

`k = keys(c)` returns a list of all the keys in a data cache as a cell array.

Examples

Get Keys from Cache

Start a persistence service that uses Redis as the persistence provider. The service requires a connection name and an open port. Once the service is running, you can connect to the service using the connection name and create a cache.

```
ctrl = mps.cache.control('myRedisConnection','Redis','Port',4519);  
start(ctrl)  
c = mps.cache.connect('myCache', 'Connection', 'myRedisConnection');
```

Add keys and values to the cache.

```
put(c,'keyOne',10,'keyTwo',20,'keyThree',30,'keyFour',[400 500],'keyFive',magic(5))
```

Get all keys.

```
k = keys(c)
```

```
k =
```

```
5×1 cell array
```

```
{'keyFive' }  
{'keyFour' }  
{'keyOne' }  
{'keyThree'}  
{'keyTwo' }
```

Input Arguments

c — Data cache

persistence provider specific data cache object

A data cache represented by a persistence provider specific data cache object.

Currently, Redis and MATLAB are the only supported persistence providers. Therefore, the cache objects will be of type `mps.cache.RedisCache` or `mps.cache.MATFileCache`.

Example: `c`

Output Arguments

k — Keys

cell array of character vectors

Keys from cache, returned as a cell array of character vectors.

See Also

bytes | get | isKey | length | put

Topics

“Use a Data Cache to Persist Data” (MATLAB Production Server)

Introduced in R2018b

length

Number of key-value pairs in the data cache

Syntax

```
num = length(c)
num = length(c, location)
```

Description

`num = length(c)` returns the total number of key-value pairs in the data cache `c`.

`num = length(c, location)` returns the numbers of key-value pairs in the data cache `c` stored remotely or locally as specified by `location`.

Examples

Count the Number of Key-Value Pairs

Start a persistence service that uses Redis as the persistence provider. The service requires a connection name and an open port. Once the service is running, you can connect to the service using the connection name and create a cache.

```
ctrl = mps.cache.control('myRedisConnection', 'Redis', 'Port', 4519);
start(ctrl)
c = mps.cache.connect('myCache', 'Connection', 'myRedisConnection');
```

Retain a few keys locally.

```
retain(c, {'keyOne', 'keyTwo'})
```

Add keys and values to the cache.

```
put(c, 'keyOne', 10, 'keyTwo', 20, 'keyThree', 30, 'keyFour', [400 500], 'keyFive', magic(5))
```

Count the number of keys-value pairs.

```
numTotal = length(c)
numRemote = length(c, 'Remote')
numLocal = length(c, 'Local')
```

```
numTotal =
```

```
int64
```

```
5
```

```
numRemote =
```

```
int64
```

```
3
```

```
numLocal =  
    int64  
    2
```

Since `keyOne` and `keyTwo` were retained before being written to the cache, they were never written to the persistence service. They are stored locally until flushed or purged to the persistence service.

Input Arguments

c — Data cache

persistence provider specific data cache object

A data cache represented by a persistence provider specific data cache object.

Currently, Redis and MATLAB are the only supported persistence providers. Therefore, the cache objects will be of type `mps.cache.RedisCache` or `mps.cache.MATFileCache`.

Example: `c`

location — Location name

'Remote' | 'Local'

Location of keys specified as an enumerated member of the class `mps.cache.Location`. The valid location options are either 'Remote' or 'Local'.

Example: 'Remote'

Output Arguments

num — Number of keys

integer

Total number of key-value pairs in the data cache or the number stored remotely or locally, returned as an integer.

See Also

`bytes` | `get` | `isKey` | `keys` | `put`

Topics

"Use a Data Cache to Persist Data" (MATLAB Production Server)

Introduced in R2018b

mps.cache.connect

Connect to cache, or create a cache if it doesn't exist

Syntax

```
c = mps.cache.connect(cacheName)
c = mps.cache.connect(cacheName, 'Connection', connectionName)
```

Description

`c = mps.cache.connect(cacheName)` connects to a cache when there's a single connection to a persistence service.

`c = mps.cache.connect(cacheName, 'Connection', connectionName)` connects to a cache using the connection specified by `connectionName` when there are multiple connections to a persistence service.

Examples

Create a Cache When There is a Single Connection to a Persistence Service

Start a persistence service that uses Redis as the persistence provider. The service requires a connection name and an open port. Once the service is running, you can connect to the service using the connection name and create a cache.

When you have a single connection, you do not need to specify the connection name to `mps.cache.connect`.

```
ctrl = mps.cache.control('myRedisConnection', 'Redis', 'Port', 4519)
start(ctrl)
c = mps.cache.connect('myCache');
```

```
c =
```

RedisCache with properties:

```
Host: 'localhost'
Port: 4519
Name: 'myCache'
Operations: "read | write | create | update"
LocalKeys: {}
Connection: 'myRedisConnection'
```

Use `getp` instead of dot notation to access properties.

Create a Cache When There are Multiple Connections to a Persistence Service

When you have multiple connections to a persistence service, create a cache by specifying the connection name associated with the service you want to use.


```
ctrl_1 = mps.cache.control('myRedisConnection1', 'Redis', 'Port', 4519)
start(ctrl_1)
ctrl_2 = mps.cache.control('myRedisConnection2', 'Redis', 'Port', 4520)
start(ctrl_2)
c = mps.cache.connect('myCache', 'Connection', 'myRedisConnection1')
```

```
c =
```

RedisCache with properties:

```
    Host: 'localhost'
    Port: 4519
    Name: 'myCache'
Operations: "read | write | create | update"
  LocalKeys: {}
  Connection: 'myRedisConnection1'
```

Use `getp` instead of dot notation to access properties.

Input Arguments

cacheName — Cache name to connect to or create

character vector

Cache name to connect to or create, specified as a character vector.

Example: 'myCache'

connectionName — Name of connection

character vector

Name of connection to persistence service, specified as a character vector.

Example: 'Connection', 'myRedisConnection'

Output Arguments

c — Data cache object

persistence provider-specific data cache object

A persistence provider specific data cache object.

Currently, Redis and MATLAB are the only supported persistence providers. Therefore, the cache objects will be of type `mps.cache.RedisCache` or `mps.cache.MATFileCache`.

See Also

`mps.cache.DataCache`

Introduced in R2018b

mps.cache.control

Create a persistence service controller object

Syntax

```
ctrl = mps.cache.control(connectionName,Provider,'Port',num)
ctrl = mps.cache.control(connectionName,Provider,'Folder',folderPath)
```

Description

`ctrl = mps.cache.control(connectionName,Provider,'Port',num)` creates a persistence service controller object using a connection to a persistence service specified by `connectionName`, a persistence provider specified by `Provider`, and a port number `num` for the service.

You cannot compile and deploy this function on the server. This function is available only for testing.

`ctrl = mps.cache.control(connectionName,Provider,'Folder',folderPath)` creates a persistence service controller object that uses a folder specified by `folderPath` as a database.

Use this syntax when you want to use MATLAB as a persistence provider for testing purposes.

You cannot compile and deploy this function on the server. This function is available only for testing.

Examples

Create a Redis Service Controller

```
ctrl = mps.cache.control('myRedisConnection','Redis','Port',4519)
ctrl =
```

Controller with properties:

```
ActiveConnection: False
ManageService: Unknown
Host: 'localhost'
Port: 4519
Operations: "read | write | create | update"
ProviderName: 'Redis'
ConnectionName: 'myRedisConnection'
```

Create a MATLAB Service Controller

```
mctrl = mps.cache.control('myMATFileConnection','MatlabTest','Folder','c:\tmp')
mctrl =
```

Controller with properties:

```
ActiveConnection: False
ManageService: Unknown
Folder: 'c:\tmp'
```

```

    Operations: "read | write | create | update"
    ProviderName: 'MatlabTest'
    ConnectionName: 'myMATFileConnection'

```

Input Arguments

connectionName — Name of the connection

character vector | string

Name of the connection to the persistence service, specified as a character vector.

The `connectionName` links a MATLAB session to a persistence service.

Example: 'myRedisConnection'

Provider — Name of the persistence provider

'Redis' | 'MatlabTest'

Name of the persistence provider, specified as a character vector.

You can use MATLAB as a persistence provider for testing purposes. If you use MATLAB as a persistence provider, specify the provider name as 'MatlabTest'.

Example: 'Redis'

Example: 'MatlabTest'

num — Port number

positive scalar

Port number for the persistence service.

Example: 'Port', 4519

folderPath — Storage folder path

character vector

Storage folder path, specified as a character vector.

Specify this input only when you want to use MATLAB as a persistence provider for testing purposes. A folder specified by `folderPath` serves as a database.

Example: 'Folder', 'c:\tmp'

Output Arguments

ctrl — Persistence provider service controller object

mps.cache.Controller object

Persistence provider service controller returned as a `mps.cache.Controller` object.

See Also

mps.cache.Controller | restart | start | stop

Topics

“Use a Data Cache to Persist Data” (MATLAB Production Server)

Introduced in R2018b

mps.sync.mutex

Create a persistence service mutex

Syntax

```
lk = mps.sync.mutex(mutexName, 'Connection', connectionName, Name, Value)
```

Description

`lk = mps.sync.mutex(mutexName, 'Connection', connectionName, Name, Value)` creates a database advisory lock object.

Examples

Create a Redis Mutex

First, create a persistence service controller object and use that object to start the persistence service.

```
ctrl = mps.cache.control('myRedisConnection', 'Redis', 'Port', 4519);  
start(ctrl)
```

Use the connection name to create a persistence service mutex.

```
lk = mps.sync.mutex('myMutex', 'Connection', 'myRedisConnection')
```

```
lk =
```

```
TimedRedisMutex with properties:
```

```
Expiration: 10  
ConnectionName: 'myRedisConnection'  
MutexName: 'myMutex'
```

Input Arguments

mutexName — Mutex name

character vector

Name of persistence service mutex, specified as a character vector.

Example: 'myMutex'

connectionName — Name of connection

character vector

Name of connection to persistence service, specified as a character vector.

Example: 'Connection', 'myRedisConnection'

Name-Value Pair Arguments

Specify optional comma-separated pairs of `Name`, `Value` arguments. `Name` is the argument name and `Value` is the corresponding value. `Name` must appear inside quotes. You can specify several name and value pair arguments in any order as `Name1, Value1, ..., NameN, ValueN`.

Example: `'Expiration', 10`

Expiration — Time in seconds

positive integer

Expiration time in seconds after the lock is acquired.

Other clients will be able to acquire the lock even if you do not release it.

Example: `'Expiration', 10`

Output Arguments

`lk` — Mutex object

persistence service mutex object

A persistence service mutex object. If you use Redis as your persistence provider, `lk` will be a `mps.sync.TimedRedisMutex` object. If you use MATLAB as your persistence provider, `lk` will be a `mps.sync.TimedMATFileMutex` object.

Tips

- A persistence service mutex allows multiple clients to take turns using a shared resource. Each cooperating client creates a mutex object with the same name using a connection to a shared persistence service. To gain exclusive access to the shared resource, a client attempts to acquire a lock on the mutex. When the client finishes operating on the shared resource, it releases the lock. To prevent lockouts should the locking client crash, all locks expire after a certain amount of time.
- Acquiring a lock on a mutex prevents other clients from acquiring a lock on that mutex but it does not lock the persistence service or any keys or values stored in the persistence service. These locks are advisory only and are meant to be used by cooperating clients intent of preventing data corruption. Rogue clients will be able to corrupt or delete data if they do not voluntarily respect the mutex locks.

See Also

`acquire` | `mps.sync.TimedMATFileMutex` | `mps.sync.TimedRedisMutex` | `own` | `release`

Topics

“Use a Data Cache to Persist Data” (MATLAB Production Server)

Introduced in R2018b

own

Check ownership of advisory lock on a persistence service mutex object

Syntax

```
TF = own(lk)
```

Description

`TF = own(lk)` returns a logical 1 (`true`) if you own an advisory lock on the persistence service mutex, and returns a logical 0 (`false`) otherwise.

Examples

Check If You Own the Advisory Lock

First, create a persistence service controller object and use that object to start the persistence service.

```
ctrl = mps.cache.control('myRedisConnection', 'Redis', 'Port', 4519);
start(ctrl)
```

Use the connection name to create a persistence service mutex.

```
lk = mps.sync.lock('myDbLock', 'Connection', 'myRedisConnection')
```

Check if you own the advisory lock.

```
TF = own(lk)
```

```
TF =
```

```
    logical
```

```
    0
```

Input Arguments

lk — Mutex object

persistence service mutex object

A persistence service specific mutex object. If you use Redis as your persistence provider, `lk` will be a `mps.sync.TimedRedisMutex` object. If you use a MATLAB as your persistence provider, `lk` will be a `mps.sync.TimedMATFileMutex` object.

Output Arguments

TF — Logical value

logical array

TF has a logical 1 (`true`) if you own the advisory lock on the persistence service mutex, and a logical 0 (`false`) otherwise.

See Also

`acquire` | `mps.sync.TimedMATFileMutex` | `mps.sync.TimedRedisMutex` | `mps.sync.mutex` | `release`

Topics

“Use a Data Cache to Persist Data” (MATLAB Production Server)

Introduced in R2018b

ping

Test whether the persistence service is reachable

Syntax

```
ping(ctrl)
```

Description

`ping(ctrl)` tests whether the persistence service is reachable. In order to ping a persistence service, it must be started and attached to your MATLAB session.

Examples

Ping Persistence Service

Test whether the persistence service is reachable.

First, create a persistence service controller object and use that object to start the persistence service. Once you have a persistence service running, you can ping the service.

```
ctrl = mps.cache.control('myRedisConnection', 'Redis', 'Port', 4519);  
start(ctrl)  
ping(ctrl)
```

```
Sending ping to Redis on localhost:4519.  
Redis service running on localhost:4519.
```

```
ans =
```

```
    logical
```

```
    1
```

Input Arguments

ctrl — Service controller

`mps.cache.Controller` object

Persistence service controller, represented as a `mps.cache.Controller` object.

Example: `ping(ctrl)`

See Also

`restart` | `start` | `stop`

Topics

“Use a Data Cache to Persist Data” (MATLAB Production Server)

Introduced in R2018b

purge

Flush all local data to the persistence service

Syntax

```
purgedKeys = purge(c)
```

Description

`purgedKeys = purge(c)` flushes all local data to the persistence service and removes it locally.

Examples

Flush All Local Data to the Persistence Service

Start a persistence service that uses Redis as the persistence provider. The service requires a connection name and an open port. Once the service is running, you can connect to the service using the connection name and create a cache.

```
ctrl = mps.cache.control('myRedisConnection','Redis','Port',4519);
start(ctrl)
c = mps.cache.connect('myCache','Connection','myRedisConnection');
```

Add keys and values to the cache.

```
put(c,'keyOne',10,'keyTwo',20,'keyThree',30,'keyFour',[400 500],'keyFive',magic(5))
```

Retain a few keys locally. For more information, see `retain`.

```
retain(c, {'keyOne','keyTwo'})
```

Modify the local keys and purge the data. Display the keys and values in the cache as a MATLAB table.

```
put(c,'keyOne',rand(3),'keyTwo',eye(10))
purgedKeys = purge(c)
tt = table(keys(c), get(c,keys(c)),'VariableNames',{'Keys','Values'})
display(c)
```

```
purgedKeys =
```

```
2×1 cell array
```

```
{'keyOne'}
{'keyTwo'}
```

```
tt =
```

```
5×2 table
```

```
Keys Values
```

```
'keyFive'    [ 5×5  double]
'keyFour'    [ 1×2  double]
'keyOne'     [ 3×3  double]
'keyThree'   [          30]
'keyTwo'     [10×10 double]
```

```
c =
```

```
RedisCache with properties:
```

```
    Host: 'localhost'
    Port: 4519
    Name: 'myCache'
Operations: "read | write | create | update"
  LocalKeys: {}
Connection: 'myRedisConnection'
```

Use `getp` instead of dot notation to access properties.

Input Arguments

c — Data cache

persistence provider specific data cache object

A data cache represented by a persistence provider specific data cache object.

Currently, Redis and MATLAB are the only supported persistence providers. Therefore, the cache objects will be of type `mps.cache.RedisCache` or `mps.cache.MATFileCache`.

Example: `c`

Output Arguments

purgedKeys — Purged keys

cell array of character vectors

List of keys that were written to the persistence service, returned as a cell array of character vectors.

See Also

`clear` | `flush` | `keys` | `length` | `remove` | `retain`

Topics

“Use a Data Cache to Persist Data” (MATLAB Production Server)

Introduced in R2018b

put

Write key-value pairs to cache

Syntax

```
put(c, key1, value1, ..., keyN, valueN)
put(c, keySet, valueSet)
```

Description

`put(c, key1, value1, ..., keyN, valueN)` writes key-value pairs to cache. You can store any type of MATLAB data in a cache.

`put(c, keySet, valueSet)` writes key-value pairs to cache with keys from `keySet`, each mapped to a corresponding value from `valueSet`. The input arguments `keySet` and `valueSet` must have the same number of elements, with `keySet` having elements that are unique.

Examples

Write a Series of Key-Value Pairs to Cache

Start a persistence service that uses Redis as the persistence provider. The service requires a connection name and an open port. Once the service is running, you can connect to the service using the connection name and create a cache.

```
ctrl = mps.cache.control('myRedisConnection', 'Redis', 'Port', 4519);
start(ctrl)
c = mps.cache.connect('myCache', 'Connection', 'myRedisConnection');
```

Add keys and values to the cache and display them as a MATLAB table.

```
put(c, 'keyOne', 10, 'keyTwo', 20, 'keyThree', 30, 'keyFour', [400 500], 'keyFive', magic(5))
tt = table(keys(c), get(c, keys(c)), 'VariableNames', {'Keys', 'Values'})
```

```
tt =
```

```
5×2 table
```

Keys	Values
'keyFive'	[5×5 double]
'keyFour'	[1×2 double]
'keyOne'	[10]
'keyThree'	[30]
'keyTwo'	[20]

Write a Set of Keys and Corresponding Values to Cache

Start a persistence service that uses Redis as the persistence provider. The service requires a connection name and an open port. Once the service is running, you can connect to the service using the connection name and create a cache.

```
ctrl = mps.cache.control('myRedisConnection','Redis','Port',4519);
start(ctrl)
c = mps.cache.connect('myCache', 'Connection', 'myRedisConnection');
```

Add a set of keys and corresponding values to the cache and display them as a MATLAB table.

```
keySet = {'keyOne', 'keyTwo', 'keyThree', 'keyFour', 'keyFive'}
valueSet = {10, 20, 30, [400 500], magic(5)}
put(d, keySet, valueSet)
tt = table(keys(c), get(c, keys(c)), 'VariableNames', {'Keys', 'Values'})
```

```
tt =
```

```
5x2 table
```

Keys	Values
'keyFive'	[5x5 double]
'keyFour'	[1x2 double]
'keyOne'	[10]
'keyThree'	[30]
'keyTwo'	[20]

Input Arguments

c — Data cache

persistence provider specific data cache object

A data cache represented by a persistence provider specific data cache object.

Currently, Redis and MATLAB are the only supported persistence providers. Therefore, the cache objects will be of type `mps.cache.RedisCache` or `mps.cache.MATFileCache`.

Example: `c`

key — Key

character vector

Key to add, specified as a character vector.

Example: `'keyFour'`

value — Value

array

Value, specified as an array. `value` can be any valid MATLAB data type.

Example: `[400, 500]`

keySet — Keys

cell array of character vectors

Keys, specified as a cell array of character vectors.

Example: {'keyOne', 'keyTwo', 'keyThree', 'keyFour', 'keyFive'}

valueSet – Values

cell array

Values, specified as comma-separated cell array. Each value may be any valid MATLAB data type.

Example: {10, 20, 30, [400 500], magic(5)}

See Also

bytes | clear | get | keys | length | remove

Topics

“Use a Data Cache to Persist Data” (MATLAB Production Server)

Introduced in R2018b

release

Release advisory lock on persistence service mutex

Syntax

```
TF = release(lk)
```

Description

`TF = release(lk)` releases an advisory lock on a persistence service mutex. If the lock expires before you release it, `release` returns a logical 0 (`false`). If this occurs, it may indicate potential data corruption.

Examples

Release Advisory Lock

First, create a persistence service controller object and use that object to start the persistence service.

```
ctrl = mps.cache.control('myRedisConnection', 'Redis', 'Port', 4519);  
start(ctrl)
```

Use the connection name to create a persistence service mutex.

```
lk = mps.sync.lock('myDbLock', 'Connection', 'myRedisConnection')
```

Try to acquire advisory lock. If lock is unavailable, retry acquiring for 20 seconds.

```
acquire(lk, 20);
```

Release lock.

```
TF = release(lk)
```

```
TF =
```

```
    logical
```

```
     1
```

Input Arguments

lk — Mutex object

persistence service mutex object

A persistence service specific mutex object. If you use Redis as your persistence provider, `lk` will be a `mps.sync.TimedRedisMutex` object. If you use a MATLAB as your persistence provider, `lk` will be a `mps.sync.TimedMATFileMutex` object.

Output Arguments

TF — Logical value

logical array

TF has a logical 1 (`true`) if releasing the advisory lock was successful, and a logical 0 (`false`) otherwise.

See Also

`acquire` | `mps.sync.TimedMATFileMutex` | `mps.sync.TimedRedisMutex` | `mps.sync.mutex` | `own`

Topics

“Use a Data Cache to Persist Data” (MATLAB Production Server)

Introduced in R2018b

remove

Remove keys from cache

Syntax

```
num = remove(c,keys)
```

Description

`num = remove(c,keys)` removes keys and associated values from cache. There is no way to recover removed keys.

Examples

Remove Keys from Cache

Start a persistence service that uses Redis as the persistence provider. The service requires a connection name and an open port. Once the service is running, you can connect to the service using the connection name and create a cache.

```
ctrl = mps.cache.control('myRedisConnection','Redis','Port',4519);
start(ctrl)
c = mps.cache.connect('myCache','Connection','myRedisConnection');
```

Add keys and values to the cache and display them as a MATLAB table.

```
put(c,'keyOne',10,'keyTwo',20,'keyThree',30,'keyFour',[400 500],'keyFive',magic(5))
tt = table(keys(c), get(c,keys(c))','VariableNames',{'Keys','Values'})
```

```
tt =
```

```
5×2 table
```

Keys	Values
'keyFive'	[5×5 double]
'keyFour'	[1×2 double]
'keyOne'	[10]
'keyThree'	[30]
'keyTwo'	[20]

Remove two keys from cache `c` and display the remaining keys and values in the cache as a MATLAB table.

```
num = remove(c,{'keyThree','keyFour'})
tt = table(keys(c), get(c,keys(c))','VariableNames',{'Keys','Values'})
```

```
num =
```

```
int64
```

```

2

tt =

3x2 table

  Keys          Values
  -----
'keyFive'      [5x5 double]
'keyOne'        [          10]
'keyTwo'        [          20]

```

Input Arguments

c — Data cache

persistence provider specific data cache object

A data cache represented by a persistence provider specific data cache object.

Currently, Redis and MATLAB are the only supported persistence providers. Therefore, the cache objects will be of type `mps.cache.RedisCache` or `mps.cache.MATFileCache`.

Example: `c`

keys — Keys to remove

cell array of character vectors

Keys to remove from cache, specified as a cell array of character vectors.

Example: `{ 'keyThree', 'keyFour' }`

Output Arguments

num — Number of keys removed

integer

Number of keys removed, returned as an integer.

See Also

`clear` | `get` | `keys` | `purge` | `put` | `retain`

Topics

“Use a Data Cache to Persist Data” (MATLAB Production Server)

Introduced in R2018b

restart

Restart a persistence service and attach it to a MATLAB session

Syntax

```
restart(ctrl)
```

Description

`restart(ctrl)` restarts a persistence service represented by `ctrl`. You only restart a services you originally started using `start`.

Examples

Restart a Persistence Provider

Restart a persistence service.

First, create a persistence service controller object and use that object to start the persistence service. Once you have a persistence service running, you can then restart it.

```
ctrl = mps.cache.control('myRedisConnection', 'Redis', 'Port', 4519);  
start(ctrl)  
restart(ctrl)
```

Input Arguments

`ctrl` — Service controller

`mps.cache.Controller` object

Persistence service controller, represented as a `mps.cache.Controller` object.

Example: `restart(ctrl)`

See Also

`attach` | `detach` | `start` | `stop`

Topics

“Use a Data Cache to Persist Data” (MATLAB Production Server)

Introduced in R2018b

retain

Store remote keys from cache locally or return locally stored keys

Syntax

```
retain(c, remoteKeys)
localKeys = retain(c)
```

Description

`retain(c, remoteKeys)` stores keys from cache locally.

`localKeys = retain(c)` returns a cell array of keys stored locally.

Examples

Store Keys from Cache Locally and Check Local Keys

Start a persistence service that uses Redis as the persistence provider. The service requires a connection name and an open port. Once the service is running, you can connect to the service using the connection name and create a cache.

```
ctrl = mps.cache.control('myRedisConnection', 'Redis', 'Port', 4519);
start(ctrl)
c = mps.cache.connect('myCache', 'Connection', 'myRedisConnection');
```

Add keys and values to the cache.

```
put(c, 'keyOne', 10, 'keyTwo', 20, 'keyThree', 30, 'keyFour', [400 500], 'keyFive', magic(5))
```

Retain a few keys locally and check local keys.

```
retain(c, {'keyThree', 'keyFour'})
localKeys = retain(c)
```

```
localKeys =
```

```
    1×2 cell array
```

```
    {'keyThree'}    {'keyFour'}
```

Input Arguments

c — Data cache

persistence provider specific data cache object

A data cache represented by a persistence provider specific data cache object.

Currently, Redis and MATLAB are the only supported persistence providers. Therefore, the cache objects will be of type `mps.cache.RedisCache` or `mps.cache.MATFileCache`.

Example: c

remoteKeys — Keys

cell array of character vectors

Remote keys to store locally, specified as a cell array of character vectors.

Example: { 'keyThree' , 'keyFour' }

Output Arguments**localKeys — Keys**

cell array of character vectors

Locally stored keys, returned as a cell array of character vectors.

Tips

- As a performance optimization you may choose to temporarily store a set of keys and their values in your MATLAB session or worker instead of the persistence service. Keys *retained* in the this fashion will be automatically written to the persistence service (see `flush`) when MATLAB exits or when the first function call returns.
- Manually control the lifetime of retained keys with the `flush` and `purge` methods.

See Also

`clear` | `flush` | `purge` | `remove`

Topics

“Use a Data Cache to Persist Data” (MATLAB Production Server)

Introduced in R2018b

start

Start a persistence service and attach it a to MATLAB session

Syntax

```
start(ctrl)
```

Description

`start(ctrl)` starts a persistence service represented by `ctrl` and attaches it to a current MATLAB session.

- To make a persistence service available in a MATLAB session, the service must be started and then attached to the MATLAB session. `start` performs both these actions.
- If a persistence service has already been started, there is no need to call `start`. Use `attach` instead.
- `start` and `stop`, `attach` and `detach` must be used in pairs.
- If you connected a persistence service to your MATLAB session with `start`, you must disconnect with `stop`.
- If you connected with `attach`, you must disconnect with `detach`.

Examples

Start a Persistence Service

Start a persistence service.

First, create a persistence service controller object and use that object to start the persistence service.

```
ctrl = mps.cache.control('myRedisConnection', 'Redis', 'Port', 4519);  
start(ctrl)
```

Input Arguments

`ctrl` — Service controller

`mps.cache.Controller` object

Persistence service controller, represented as a `mps.cache.Controller` object.

Example: `start(ctrl)`

See Also

`attach` | `detach` | `restart` | `stop`

Topics

“Use a Data Cache to Persist Data” (MATLAB Production Server)

Introduced in R2018b

stop

Stop a persistence service and detach it from a MATLAB session

Syntax

```
stop(ctrl)
```

Description

`stop(ctrl)` stops a persistence service represented by `ctrl` and detaches it from a current MATLAB session.

- You cannot stop a service that has not been started.
- You can only stop a service that has been started using `start`.
- Exiting MATLAB will automatically call `stop` on all persistence services that were started using `start`.

Examples

Stop a Persistence Service

Stop a persistence service.

First, create a persistence service controller object and use that object to start the persistence service. Once you have a persistence service running, you can then stop it.

```
ctrl = mps.cache.control('myRedisConnection','Redis','Port',4519);  
start(ctrl)  
stop(ctrl)
```

Input Arguments

`ctrl` — Service controller

`mps.cache.Controller` object

Persistence service controller, represented as a `mps.cache.Controller` object.

Example: `stop(ctrl)`

See Also

`attach` | `detach` | `restart` | `start`

Topics

“Use a Data Cache to Persist Data” (MATLAB Production Server)

Introduced in R2018b

version

Version number for persistence provider

Syntax

```
version(ctrl)
```

Description

`version(ctrl)` returns the version number for the persistence provider. In order to get the version number of the persistence provider, the persistence service must be started and attached to your MATLAB session.

Examples

Get Version Number

Get the version number of the persistence provider that the persistence service is connected to.

First, create a persistence service controller object and use that object to start the persistence service. Once you have a persistence service running, you can get the version number.

```
ctrl = mps.cache.control('myRedisConnection','Redis','Port',4519);  
start(ctrl)  
version(ctrl)
```

```
Redis version: 3.0.504
```

Input Arguments

ctrl — Service controller

`mps.cache.Controller` object

Persistence service controller, represented as a `mps.cache.Controller` object.

Example: `version(ctrl)`

See Also

`restart` | `start` | `stop`

Topics

“Use a Data Cache to Persist Data” (MATLAB Production Server)

Introduced in R2018b